

VOR/DME SHB	APP CRS	Rwy Idg	<b>3902</b>
<b>116.15</b>	<b>346°</b>	TDZE	<b>857</b>
Chan <b>57</b>		Apt Elev	<b>862</b>

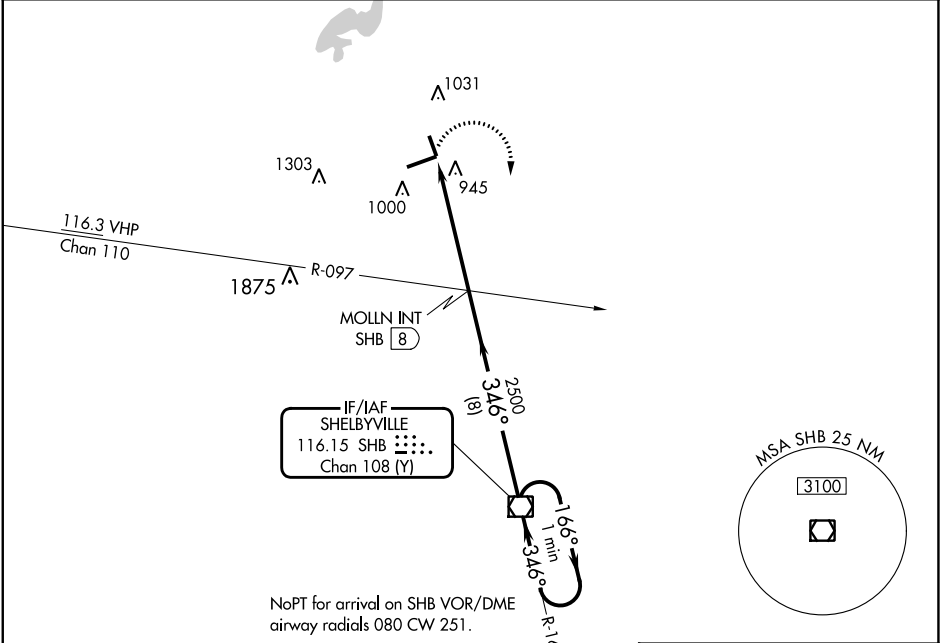
# VOR RWY 34

INDIANAPOLIS RGNL (MQJ)

**⚠** When local altimeter setting not received, use Indianapolis Intl altimeter setting and increase all MDA 60 feet and Circling Cat D visibility ¼ SM.  
**⚠ NA** VDP NA when using Indianapolis Intl altimeter setting. Rwy 34 helicopter visibility reduction below ¾ SM NA.

MISSED APPROACH: Climbing right turn to 2500 direct SHB VOR/DME and hold.

AWOS-3PT	INDIANAPOLIS APP CON	CLNC DEL	UNICOM
<b>124.175</b>	<b>127.15 317.8</b>	<b>119.25</b>	<b>122.975 (CTAF) 0</b>



EC-2, 26 DEC 2024 to 23 JAN 2025

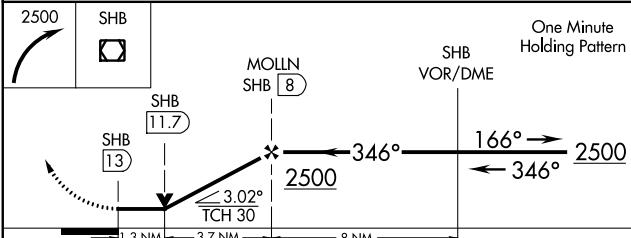
EC-2, 26 DEC 2024 to 23 JAN 2025

ELEV 862	TDZE 857
----------	----------

REIL Rwy 7 and 34  
 HIRL Rwy 7-25 0  
 MIRL Rwy 16-34

FAF to MAP 5 NM

Knots	60	90	120	150	180
Min:Sec	5:00	3:20	2:30	2:00	1:40



CATEGORY	A	B	C	D
S-34	1300-1 443 (500-1)		1300-1 3/8 443 (500-1 3/8)	
<b>C</b> CIRCLING	1340-1 478 (500-1)		1360-1 1/2 498 (500-1 1/2)	1660-2 1/2 798 (800-2 1/2)