

(BLTWY7.BLTWY) 21280

BLTWY SEVEN DEPARTURE (RNAV) AL-6453 (FAA)

TEXAS GULF COAST RGNL (L.BX)
ANGLETON/LAKE JACKSON, TEXAS

ASOS
119.925
CLNC DEL
125.2
CTAF
123.0
HOUSTON DEP CON
134.45 284.0

**TOP ALTITUDE:
ASSIGNED BY ATC**

NOTE: RADAR required.
NOTE: DME/DME/IRU or GPS required.
NOTE: RNAV 1.

TAKEOFF MINIMUMS

Rwys 17, 35: Standard with minimum climb
of 500' per NM to 540.

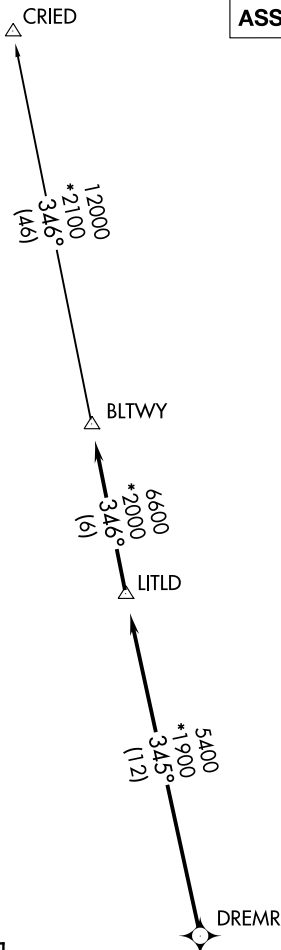
DEPARTURE ROUTE DESCRIPTION

TAKEOFF RUNWAY 17: Climb on heading 175°
to 540 for RADAR vectors to DREMR, thence . . .

TAKEOFF RUNWAY 35: Climb on heading 355°
to 540 for RADAR vectors to DREMR, thence . . .

. . . on track 345° to LITLD, then on track 346°
to BLTWY, then on (transition). Maintain ATC
assigned altitude. Expect filed altitude 10 minutes
after departure.

CRIED TRANSITION (BLTWY7.CRIED)



NOTE: Chart not to scale.

BLTWY SEVEN DEPARTURE (RNAV)

(BLTWY7.BLTWY) 07OCT21

ANGLETON/LAKE JACKSON, TEXAS
TEXAS GULF COAST RGNL (L.BX)

SC-5, 26 DEC 2024 to 23 JAN 2025

SC-5, 26 DEC 2024 to 23 JAN 2025