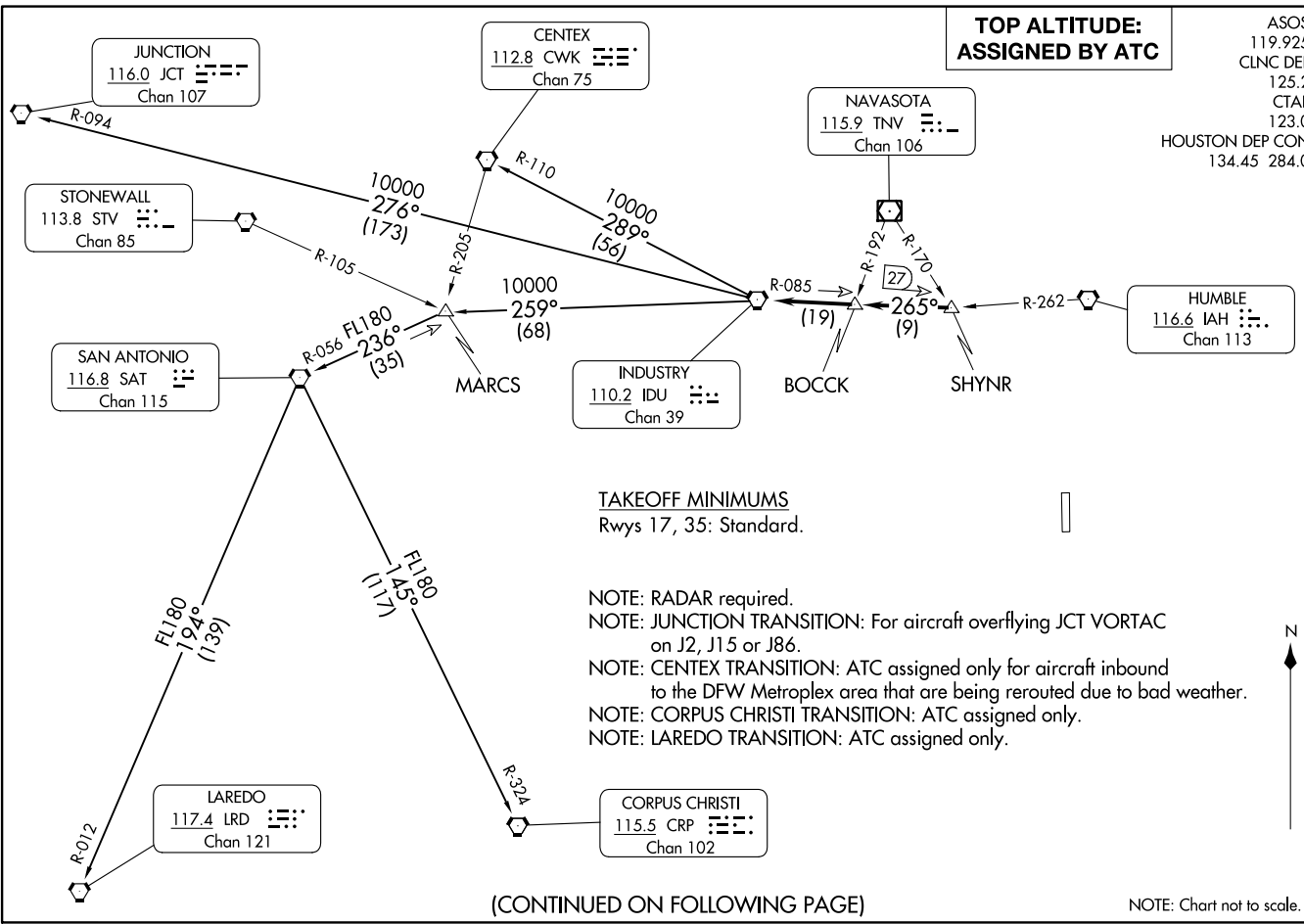


INDUSTRY ONE DEPARTURE  
(IDU1, IDU) 070CT21

ANGLETON/LAKE JACKSON, TEXAS  
TEXAS GULF COAST RGNL (LBBX)



**TOP ALTITUDE:  
ASSIGNED BY ATC**

ASOS 119.925  
 CLNC DEL 125.2  
 CTAF 123.0  
 HOUSTON DEP CON 134.45 284.0

TAKEOFF MINIMUMS  
Rwys 17, 35: Standard.

- NOTE: RADAR required.
- NOTE: JUNCTION TRANSITION: For aircraft overflying JCT VORTAC on J2, J15 or J86.
- NOTE: CENTEX TRANSITION: ATC assigned only for aircraft inbound to the DFW Metroplex area that are being rerouted due to bad weather.
- NOTE: CORPUS CHRISTI TRANSITION: ATC assigned only.
- NOTE: LAREDO TRANSITION: ATC assigned only.

(CONTINUED ON FOLLOWING PAGE)

NOTE: Chart not to scale.

INDUSTRY ONE DEPARTURE  
(IDU1, IDU) 24137

AL-6453 (FAA)

TEXAS GULF COAST RGNL (LBBX)  
ANGLETON/LAKE JACKSON, TEXAS



DEPARTURE ROUTE DESCRIPTION

TAKEOFF ALL RUNWAYS: When entering controlled airspace, climb on assigned heading for RADAR vectors to SHYNR INT. Maintain ATC assigned altitude. Expect filed altitude 10 minutes after departure, thence . . . .

. . . . on IDU R-085 to BOCK INT, then on IDU R-085 to IDU VORTAC.

CENTEX TRANSITION (IDU1.CWK): From over IDU VORTAC on IDU R-289 and CWK R-110 to CWK VORTAC.

CORPUS CHRISTI TRANSITION (IDU1.CRP): From over IDU VORTAC on IDU R-259 to MARCS INT, then on SAT R-056 to SAT VORTAC, then on SAT R-145 and CRP R-324 to CRP VORTAC.

JUNCTION TRANSITION (IDU1.JCT): From over IDU VORTAC on IDU R-276 and JCT R-094 to JCT VORTAC.

LAREDO TRANSITION (IDU1.LRD): From over IDU VORTAC on IDU R-259 to MARCS INT, then on SAT R-056 to SAT VORTAC, then on SAT R-194 and LRD R-012 to LRD VORTAC.

SC-5, 26 DEC 2024 to 23 JAN 2025

SC-5, 26 DEC 2024 to 23 JAN 2025