

RADAR and DME required.

**TOP ALTITUDE:  
ASSIGNED BY ATC**

(PSX3.PSX) 24137  
**PALACIOS THREE DEPARTURE**

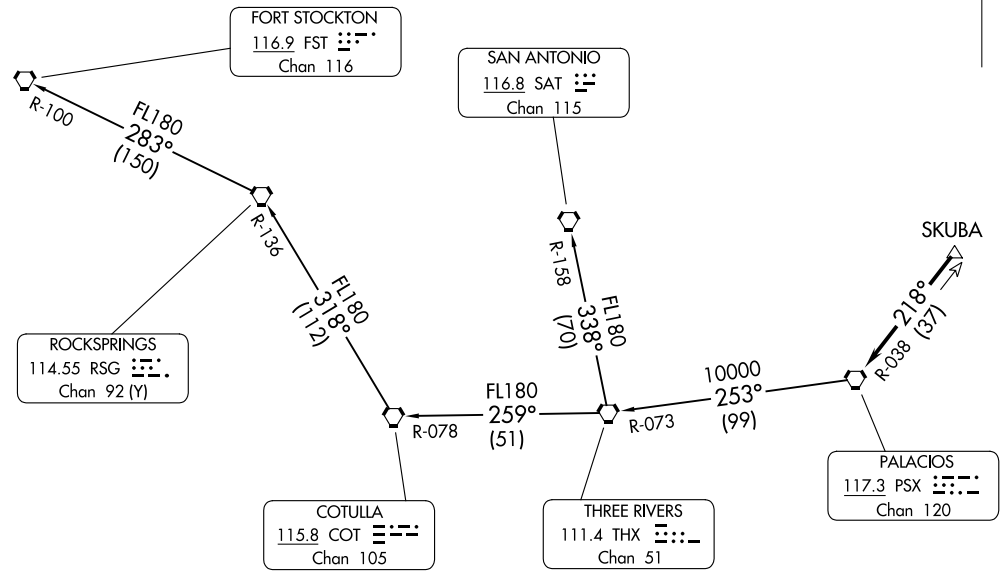
AL-6453 (FAA)

TEXAS GULF COAST RGNL (L.B.X)  
ANGLETON/LAKE JACKSON, TEXAS

ASOS  
119.925  
CLNC DEL  
125.2  
CTAF  
123.0  
HOUSTON DEP CON  
134.45 284.0

**PALACIOS THREE DEPARTURE**  
(PSX3.PSX) 03NOV22

ANGLETON/LAKE JACKSON, TEXAS  
TEXAS GULF COAST RGNL (L.B.X)



TAKEOFF MINIMUMS  
Rwys 17, 35: Standard.

NOTE: Chart not to scale.

(CONTINUED ON FOLLOWING PAGE)



DEPARTURE ROUTE DESCRIPTION

TAKEOFF ALL RUNWAYS: When entering controlled airspace, climb on assigned heading for RADAR vectors to SKUBA. Maintain ATC assigned altitude. Expect filed altitude 10 minutes after departure, thence . . . .

. . . . on PSX R-038 to PSX VORTAC.

FORT STOCKTON TRANSITION (PSX3.FST): From over PSX VORTAC on PSX R-253 and THX R-073 to THX VORTAC, then on THX R-259 and COT R-078 to COT VORTAC, then on COT R-318 and RSG R-136 to RSG VORTAC, then on RSG R-283 and FST R-100 to FST VORTAC.

SAN ANTONIO TRANSITION (PSX3.SAT): From over PSX VORTAC on PSX R-253 and THX R-073 to THX VORTAC, then on SAT R-158 to SAT VORTAC.

SC-5, 26 DEC 2024 to 23 JAN 2025

SC-5, 26 DEC 2024 to 23 JAN 2025