

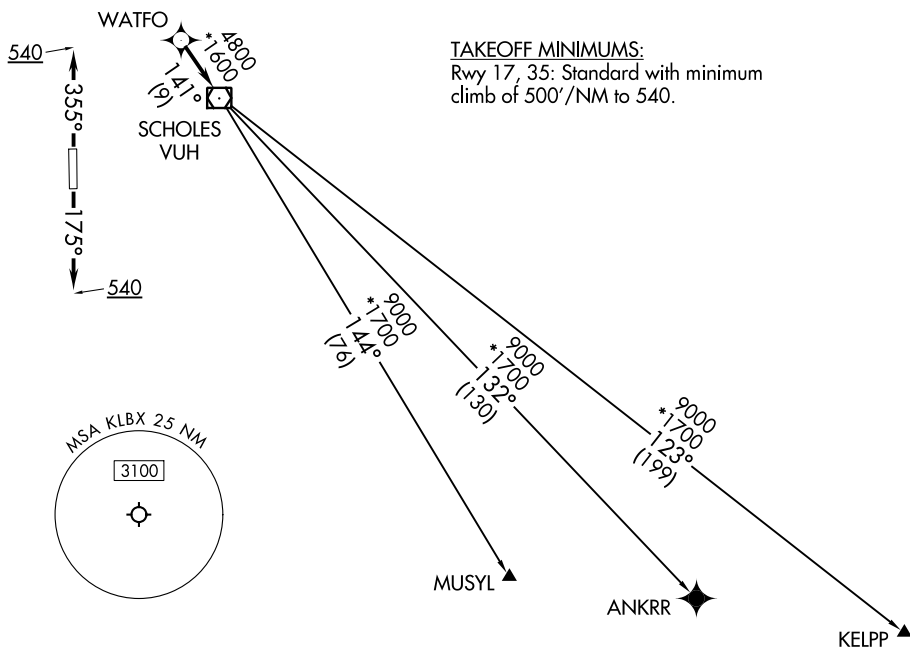
WATFO SIX DEPARTURE (RNAV)

ASOS
119.925
CTAF
123.0
CLNC DEL
125.2
HOUSTON DEP CON
134.45 284.0

RNAV 1 - DME/DME/IRU or GPS.

RADAR required.

**TOP ALTITUDE:
ASSIGNED BY ATC**



TAKEOFF MINIMUMS:

Rwy 17, 35: Standard with minimum climb of 500'/NM to 540.

NOTE: Chart not to scale.



DEPARTURE ROUTE DESCRIPTION

TAKEOFF RUNWAY 17: Climb on heading 175° to 540, for RADAR vectors to WATFO, thence. . . .

TAKEOFF RUNWAY 35: Climb on heading 355° to 540, for RADAR vectors to WATFO, thence. . . .

. . . on track 141° to VUH VOR/DME, then on (transition). Maintain ATC assigned altitude. Expect filed altitude 10 minutes after departure.

ANKRR TRANSITION (WATFO6.ANKRR)

KELPP TRANSITION (WATFO6.KELPP)

MUSYL TRANSITION (WATFO6.MUSYL)

SC-5, 26 DEC 2024 to 23 JAN 2025

SC-5, 26 DEC 2024 to 23 JAN 2025