

WYLSN EIGHT DEPARTURE (RNAV)

ANGLETON/LAKE JACKSON, TEXAS

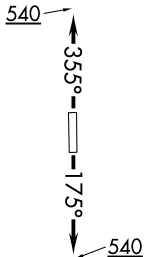
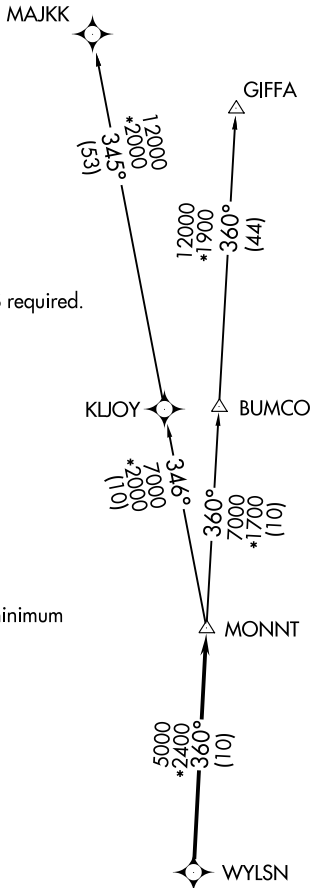
ASOS
 119.925
 CLNC DEL
 125.2
 CTAF
 123.0
 HOUSTON DEP CON
 134.45 284.0

**TOP ALTITUDE:
 ASSIGNED BY ATC**

NOTE: RADAR required.
 NOTE: DME/DME/IRU or GPS required.
 NOTE: RNAV 1.

TAKEOFF MINIMUMS

Rwy 17, 35: Standard with minimum
 climb of 500' per NM to 540.



DEPARTURE ROUTE DESCRIPTION

TAKEOFF RUNWAY 17: Climb on heading 175° to 540 for
 RADAR vectors to WYLSN, thence. . . .

TAKEOFF RUNWAY 35: Climb on heading 355° to 540 for
 RADAR vectors to WYLSN, thence. . . .

. . . .on track 360° to MONNT, then on (transition). Maintain ATC
 assigned altitude. Expect filed altitude 10 minutes after departure.

GIFFA TRANSITION (WYLSN8.GIFFA)

MAJJK TRANSITION (WYLSN8.MAJKK)

NOTE: Chart not to scale.

SC-5, 26 DEC 2024 to 23 JAN 2025

SC-5, 26 DEC 2024 to 23 JAN 2025