

APP CRS	Rwy ldg	<b>3300</b>
<b>239°</b>	TDZE	<b>688</b>
	Apt Elev	<b>688</b>

# RNAV (GPS) RWY 24

FRANKLIN COUNTY RGNL (N68)

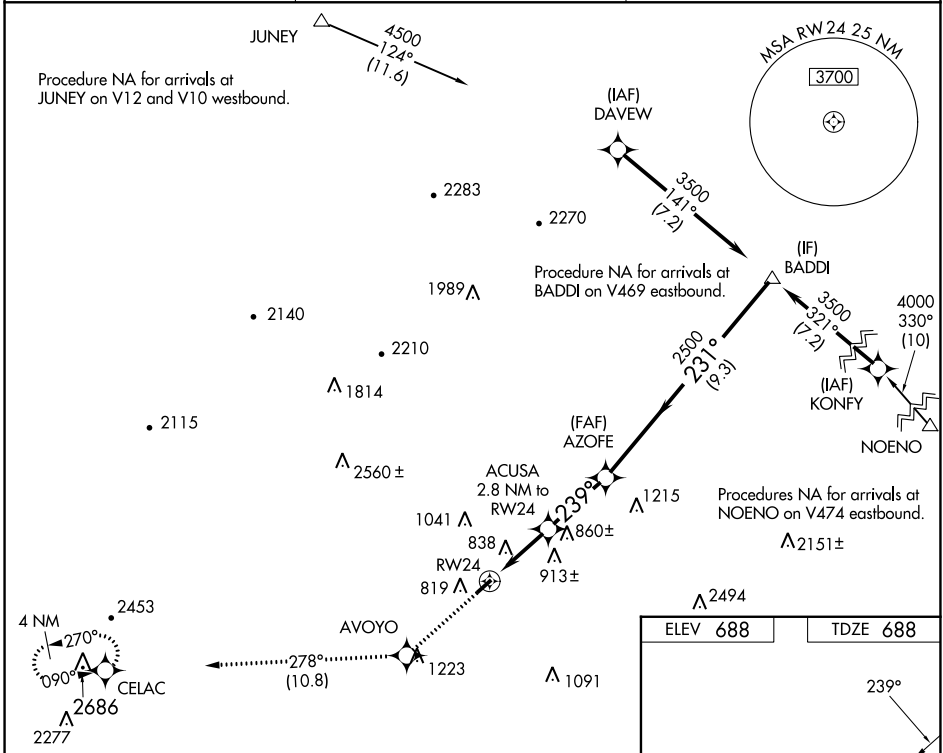
RNP APCH - GPS.

**▼** Rwy 24 helicopter visibility reduction below 1 SM NA. When local altimeter setting not received, use Hagerstown, MD altimeter setting and increase all MDAs 40 feet, increase LNAV Cat C visibility ¼ SM. Straight-in and Circling Rwy 24 NA at night.

**▲** NA

MISSED APPROACH: Climb to 4000 direct AVOYO and on track 278° to CELAC and hold, continue climb-in-hold to 4000.

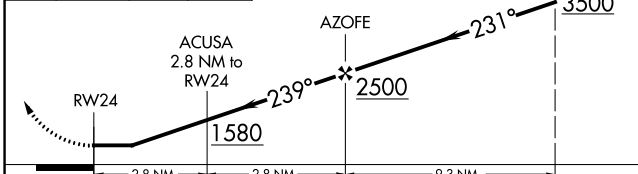
AWOS-3 <b>120.725</b>	HARRISBURG APP CON <b>124.1 273.525</b>	CTAF <b>122.9</b>
--------------------------	--	----------------------



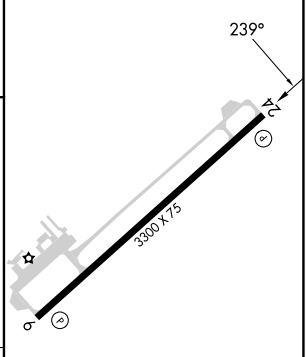
NE-4, 26 DEC 2024 to 23 JAN 2025

NE-4, 26 DEC 2024 to 23 JAN 2025

4000	AVOYO	tr	CELAC	Visual Segment - Obstacles.
↑	✧	278°	✧	



ELEV 688	TDZE 688
----------	----------



CATEGORY	A	B	C	D
LNAV MDA	1100-1	412 (500-1)	1100-1½ 412 (500-1½)	NA
CIRCLING	1220-1	532 (600-1)	1360-2 672 (700-2)	NA

MIRL Rwy 6-24