

APP CRS <b>059°</b>	Rwy Idg <b>3300</b>
	TDZE <b>688</b>
	Apt Elev <b>688</b>

# RNAV (GPS) RWY 6

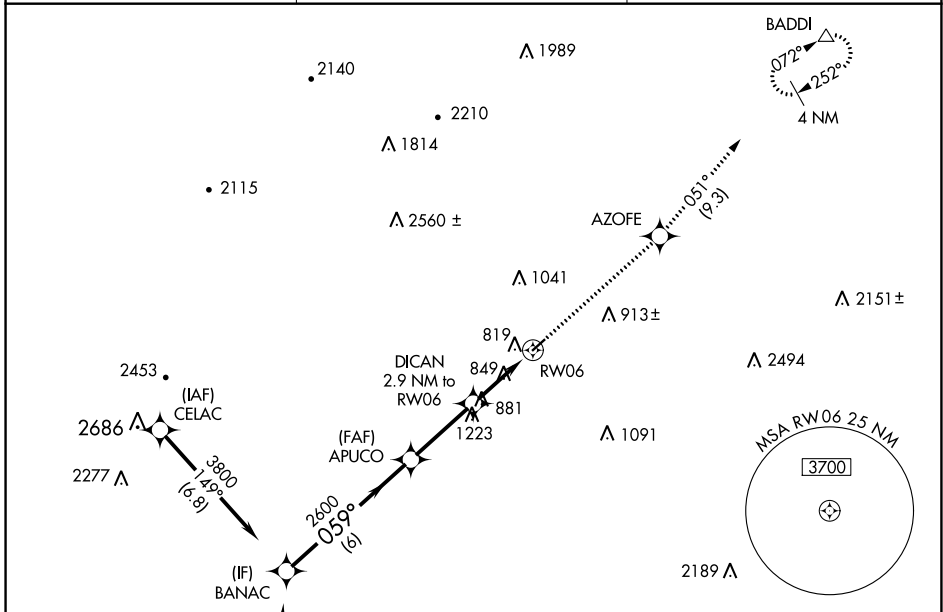
FRANKLIN COUNTY RGNL (N68)

RNP APCH - GPS.

**▼** Circling to Rwy 24 NA at night. VDP NA when using Hagerstown, MD altimeter setting.  
**▲ NA** When local altimeter setting not received, use Hagerstown, MD altimeter setting and increase all MDAs 40 feet, increase LNAV Cat C visibility ¼ SM.

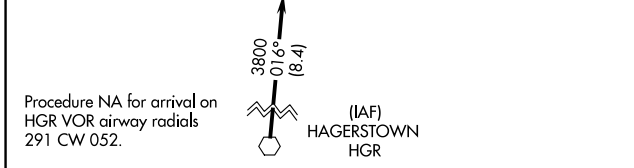
**MISSED APPROACH:** Climb to 4000 direct AZOFE and on track 051° to BADDI and hold, continue climb-in-hold to 4000.

AWOS-3 <b>120.725</b>	HARRISBURG APP CON <b>124.1 273.525</b>	CTAF <b>122.9 0</b>
--------------------------	--------------------------------------------	------------------------

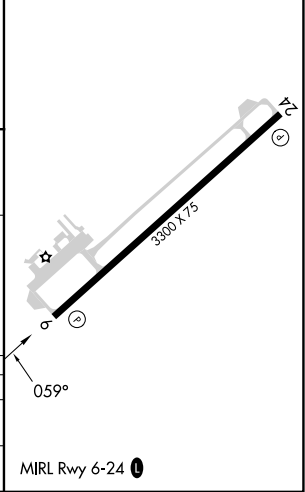
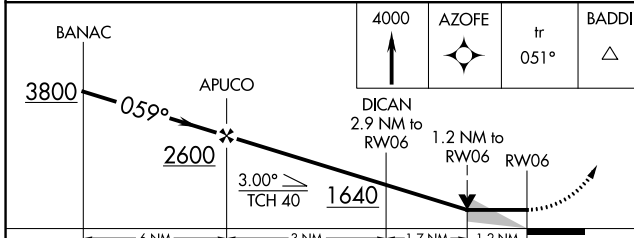


NE-4, 26 DEC 2024 to 23 JAN 2025

NE-4, 26 DEC 2024 to 23 JAN 2025



ELEV 688	TDZE 688
----------	----------



CATEGORY	A	B	C	D
LNAV MDA	1100-1	412 (500-1)	1100-1½ 412 (500-1½)	NA
CIRCLING	1220-1	532 (600-1)	1360-2 672 (700-2)	NA