

(STYCK8.STYCK) 21280

AL-6460 (FAA)

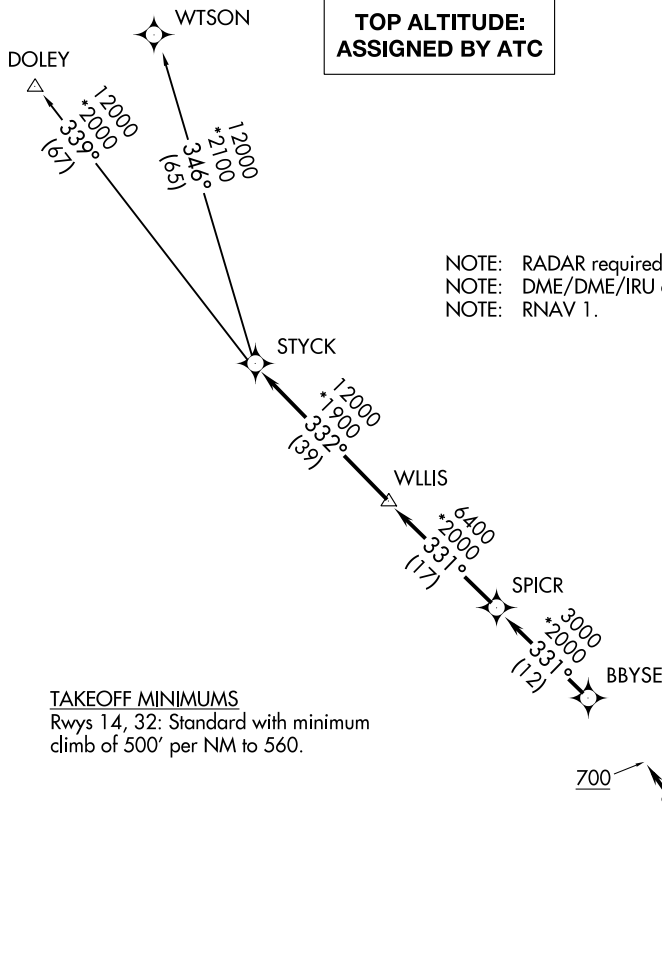
PEARLAND RGNL (L.VJ)

STYCK EIGHT DEPARTURE (RNAV)

HOUSTON, TEXAS

**TOP ALTITUDE:
ASSIGNED BY ATC**

ASOS
118.525
CLNC DEL
124.0
CTAF
122.725
HOUSTON DEP CON
134.45 284.0



NOTE: RADAR required.
NOTE: DME/DME/IRU or GPS required.
NOTE: RNAV 1.

TAKEOFF MINIMUMS

Rwys 14, 32: Standard with minimum climb of 500' per NM to 560.

NOTE: Chart not to scale.



DEPARTURE ROUTE DESCRIPTION

TAKEOFF RUNWAY 14: Climb on heading 142° to 1600 for RADAR vectors to BBYSE, thence. . .

TAKEOFF RUNWAY 32: Climb on heading 322° to 700 for RADAR vectors to BBYSE, thence. . .

. . . on track 331° to SPICR, then on track 331° to WLLIS, then on track 332° to STYCK, then on (transition). Maintain ATC assigned altitude. Expect filed altitude 10 minutes after departure.

DOLEY TRANSITION (STYCK8.DOLEY)

WTSON TRANSITION (STYCK8.WTSON)

STYCK EIGHT DEPARTURE (RNAV)

(STYCK8.STYCK) 07OCT21

HOUSTON, TEXAS

PEARLAND RGNL (L.VJ)

SC-5, 26 DEC 2024 to 23 JAN 2025

SC-5, 26 DEC 2024 to 23 JAN 2025