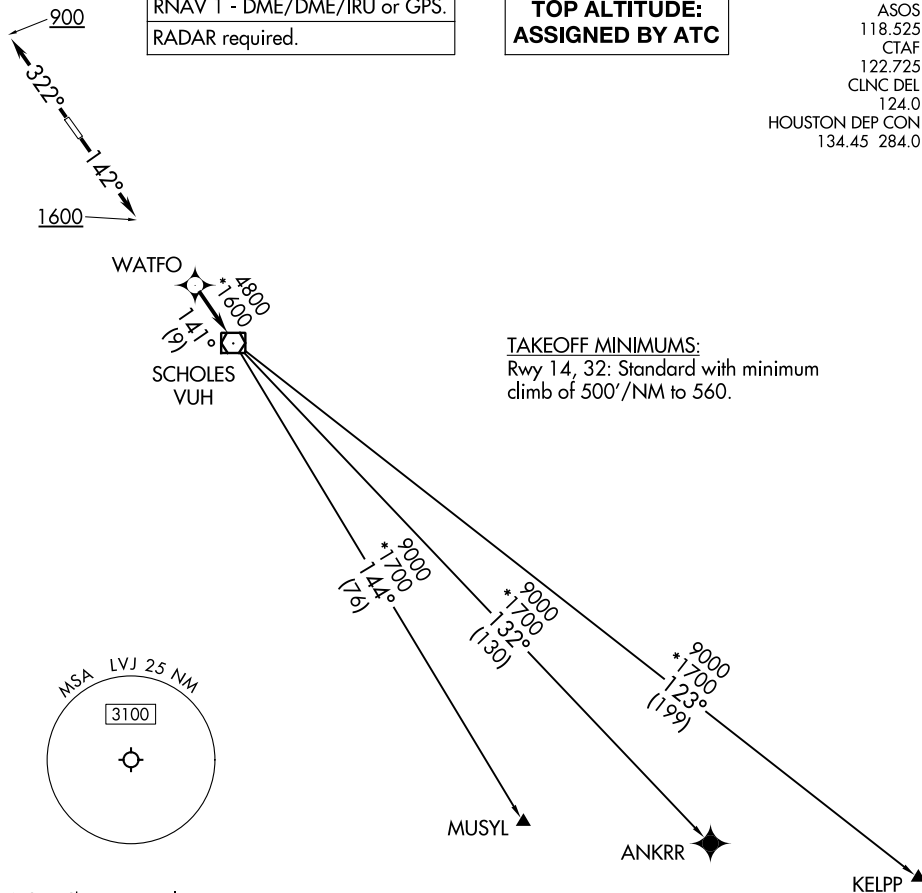


# WATFO SIX DEPARTURE (RNAV)

RNAV 1 - DME/DME/IRU or GPS.  
RADAR required.

**TOP ALTITUDE:  
ASSIGNED BY ATC**

ASOS  
118.525  
CTAF  
122.725  
CLNC DEL  
124.0  
HOUSTON DEP CON  
134.45 284.0



**TAKEOFF MINIMUMS:**  
Rwy 14, 32: Standard with minimum climb of 500'/NM to 560.

SC-5, 26 DEC 2024 to 23 JAN 2025

SC-5, 26 DEC 2024 to 23 JAN 2025

NOTE: Chart not to scale.



## DEPARTURE ROUTE DESCRIPTION

TAKEOFF RUNWAY 14: Climb on heading 142° to 1600, for RADAR vectors to WATFO, thence. . . .

TAKEOFF RUNWAY 32: Climb on heading 322° to 900, for RADAR vectors to WATFO, thence. . . .

. . . .on track 141° to VUH VOR/DME, then on (transition). Maintain ATC assigned altitude. Expect filed altitude 10 minutes after departure.

ANKRR TRANSITION (WATFO6.ANKRR)

KELPP TRANSITION (WATFO6.KELPP)

MUSYL TRANSITION (WATFO6.MUSYL)

# WATFO SIX DEPARTURE (RNAV)