

WAAS CH 56248 W17A	APP CRS 173°	Rwy Idg TDZE 889 Apt Elev 892	5799
--	------------------------	---	-------------

RNAV (GPS) RWY 17

WILLIAM R POGUE MUNI (OWP)

RNP APCH - GPS.

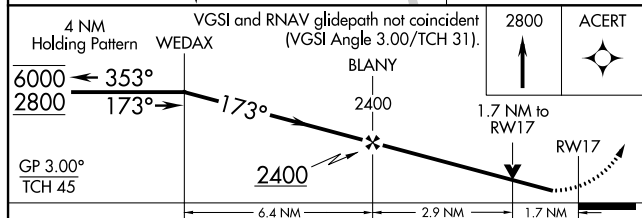
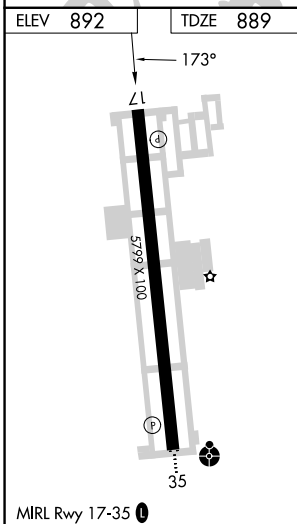
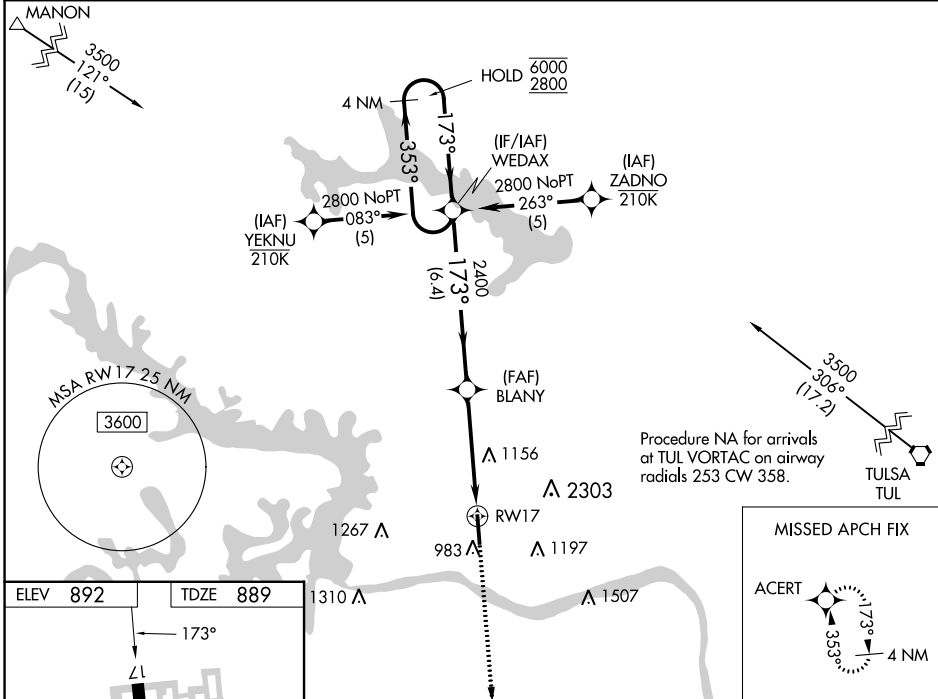
⚠ Rwy 17 helicopter visibility reduction below 3/4 SM NA. For uncompensated Baro-VNAV systems, LNAV/VNAV NA below -16°C or above 54°C. Circling NA for Cat C east of Rwy 17-35.
⚠ When local altimeter setting not received, use TUL altimeter setting and increase LPV DA to 1206 feet and all visibilities 1/2 SM; increase LNAV/VNAV DA to 1443 feet and all visibilities 1/4 SM; increase all MDAs 80 feet and LNAV visibility Cat C 1/2 SM, and Circling visibility Cat C 1/2 SM. Baro-VNAV and VDP NA when using TUL altimeter setting.

MISSED APPROACH:
Climb to 2800 direct ACERT and hold.

AWOS-3T
118.325

TULSA APP CON
124.0 338.3

UNICOM
122.7 (CTAF)



CATEGORY	A	B	C	D
LPV DA	1139-3/4		250 (300-3/4)	NA
LNAV/VNAV DA	1376-1 3/8		487 (500-1 1/8)	NA
LNAV MDA	1460-1	571 (600-1)	1460-1 5/8 571 (600-1 5/8)	NA
CIRCLING	1460-1	568 (600-1)	1460-1 5/8 568 (600-1 5/8)	NA