

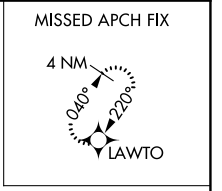
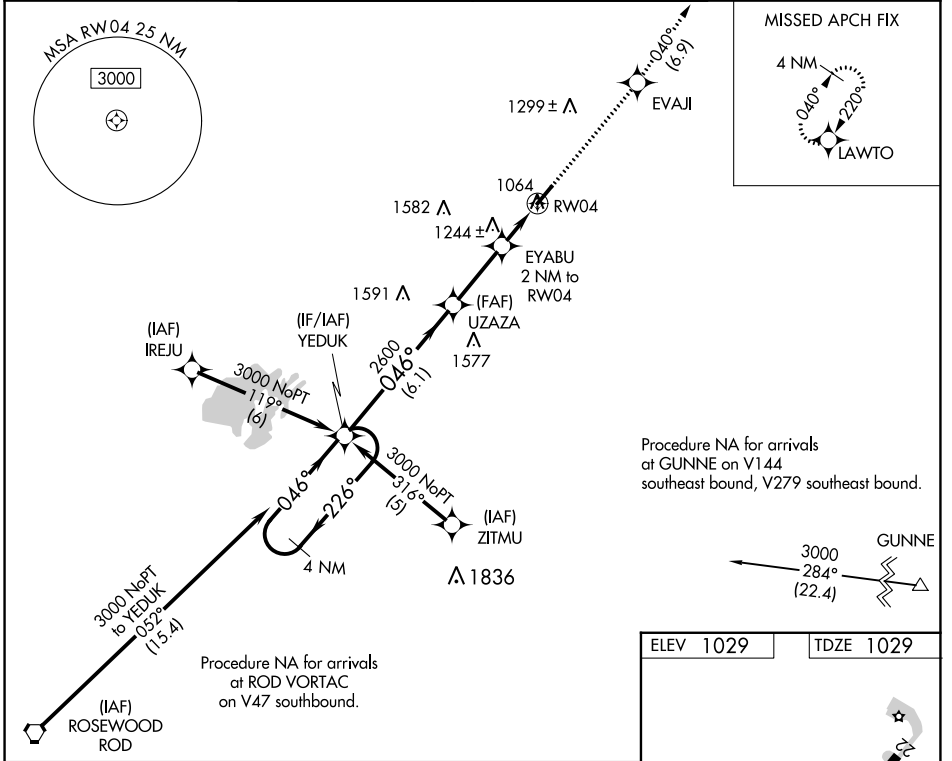
APP CRS	Rwy Idg	4797
046°	TDZE	1029
	Apt Elev	1029

RNAV (GPS) RWY 4

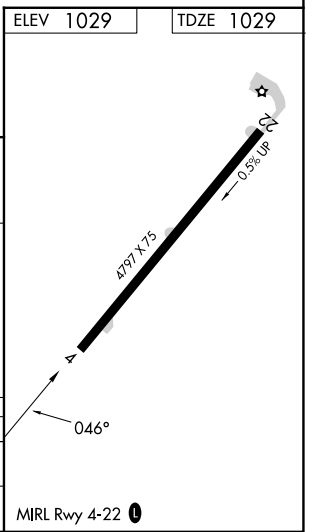
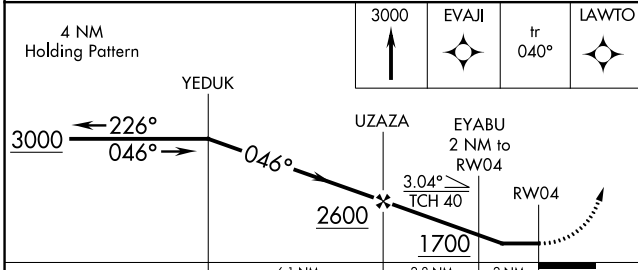
HARDIN COUNTY (I95)

RNP APCH - GPS.		UNICOM 122.8 (CTAF) 0 *	
<p>NA Rwy 4 helicopter visibility reduction below 1 SM NA. Procedure NA at night. Circling NA for Cat D NW of Rwy 4-22. When local altimeter setting not received, use Lima altimeter setting and increase all MDAs 60 feet and LNAV visibility Cat C ¼ SM, and Circling visibility Cat C ¼ SM.</p>		<p>MISSED APPROACH: Climb to 3000 direct EVAJI and on track 040° to LAWTO and hold.</p>	

AWOS-3 126.4	AOH ASOS 128.725	COLUMBUS APP CON 134.45 323.15
------------------------	----------------------------	--



Procedure NA for arrivals at GUNNE on V144 southeast bound, V279 southeast bound.



CATEGORY	A	B	C	D
LNAV MDA	1560-1	531 (600-1)	1560-1½ 531 (600-1½)	1560-1¾ 531 (600-1¾)
CIRCLING	1580-1 551 (600-1)	1620-1 591 (600-1)	1620-1½ 591 (600-1½)	1620-2 591 (600-1)

EC-2, 26 DEC 2024 to 23 JAN 2025

EC-2, 26 DEC 2024 to 23 JAN 2025