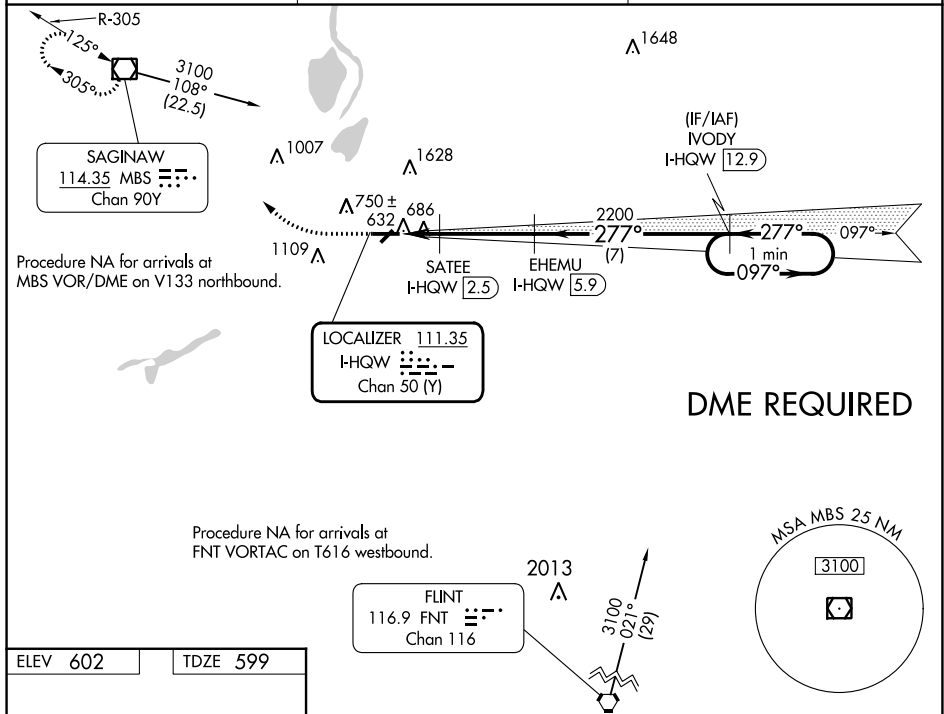


LOC/DME I-HQW 111.35 Chan 50 (Y)	APP CRS 277°	Rwy Idg TDZE Apt Elev	5002 599 602
--	------------------------	-----------------------------	---

ILS or LOC RWY 28

SAGINAW COUNTY/H W BROWNE (HYX)

NA Inoperative table does not apply to S-ILS 28. DME required. Circling Rwy 5, 23 NA at night. Circling NA for Cat C north of Rwy 10-28.	MALSF 	MISSED APPROACH: Climb to 1200 then climbing right turn to 4000 direct MBS VOR/DME and hold, continue climb-in-hold to 4000.
AWOS-3PT 118.325	GREAT LAKES APP CON* 120.95 235.625	UNICOM 122.8 (CTAF) 0



DME REQUIRED

ELEV 602	TDZE 599
-----------------	-----------------

	1200	4000	MBS	One Minute Holding Pattern
	*LOC only			
	0.9	0.6	3.4 NM	7 NM
CATEGORY	A	B	C	D
S-ILS 28		802- ³ / ₄	203 (200- ³ / ₄)	NA
S-LOC 28		940- ³ / ₄	341 (400- ³ / ₄)	NA
CIRCLING	1100-1	498 (500-1)	1460-2 ¹ / ₂ 858 (900-2 ¹ / ₂)	NA

REIL Rwy 10 **0**
HIRL Rwy 10-28 **0**
MIRL Rwy 5-23 **0**

ILS or LOC RWY 28

EC-1, 26 DEC 2024 to 23 JAN 2025

EC-1, 26 DEC 2024 to 23 JAN 2025