

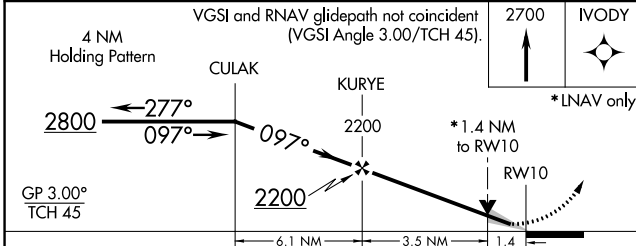
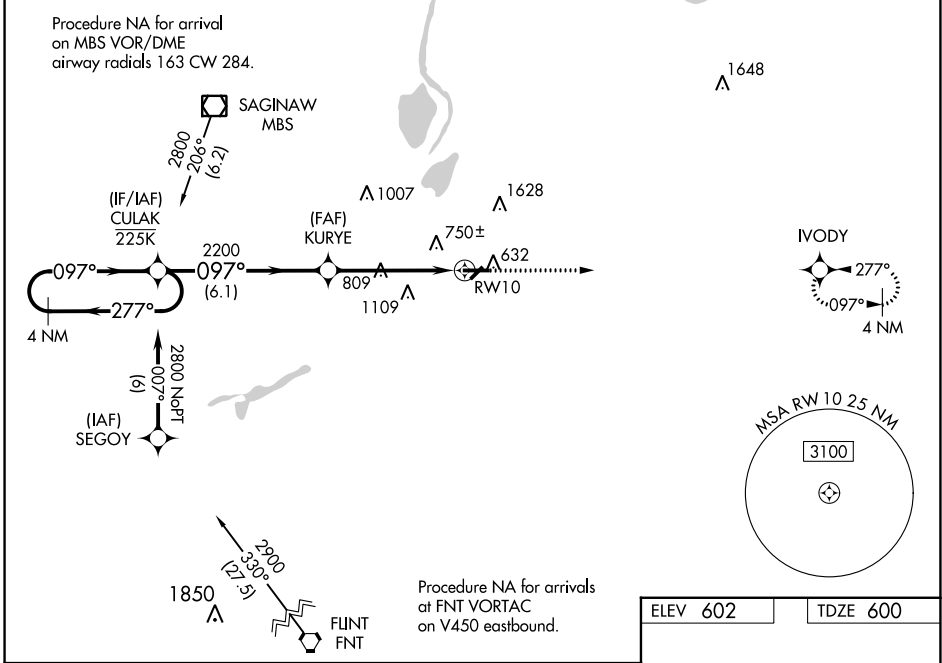
RNAV (GPS) RWY 10

SAGINAW COUNTY/H W BROWNE (HYX)

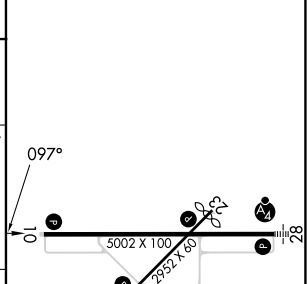
WAAS CH 50200 W10A	APP CRS 097°	Rwy Idg 5002
		TDZE 600
		Apt Elev 602

RNP APCH - GPS.	MISSED APPROACH: Climb to 2700 direct IVODY and hold.
<p>⚠ For uncompensated Baro-VNAV systems, LNAV/VNAV NA below -18°C or above 54°C. Circling NA for Cat C north of Rwy 10-28. Circling Rwy 5, 23 NA at night.</p>	

AWOS-3PT 118.325	GREAT LAKES APP CON★ 120.95 235.625	UNICOM 122.8 (CTAF) 0
----------------------------	---	---------------------------------



ELEV 602	TDZE 600
----------	----------



CATEGORY	A	B	C	D
LPV DA	800-3/4	200 (200-3/4)		NA
LNAV/VNAV DA	1018-13/8	418 (500-13/8)		NA
LNAV MDA	1060-1	460 (500-1)	1060-13/8 460 (500-13/8)	NA
C CIRCLING	1100-1	498 (500-1)	1460-21/2 858 (900-21/2)	NA

REIL Rwy 10 0
HIRL Rwy 10-28 0
MIRL Rwy 5-23 0

RNAV (GPS) RWY 10

EC-1, 26 DEC 2024 to 23 JAN 2025

EC-1, 26 DEC 2024 to 23 JAN 2025