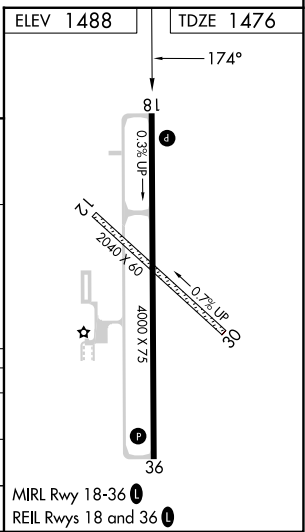
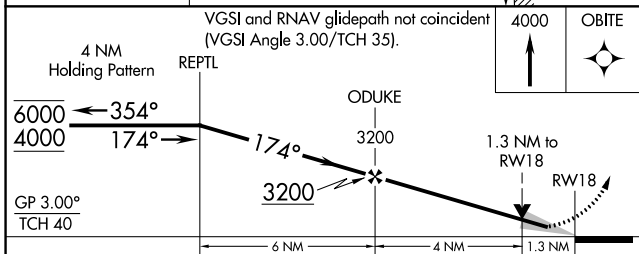
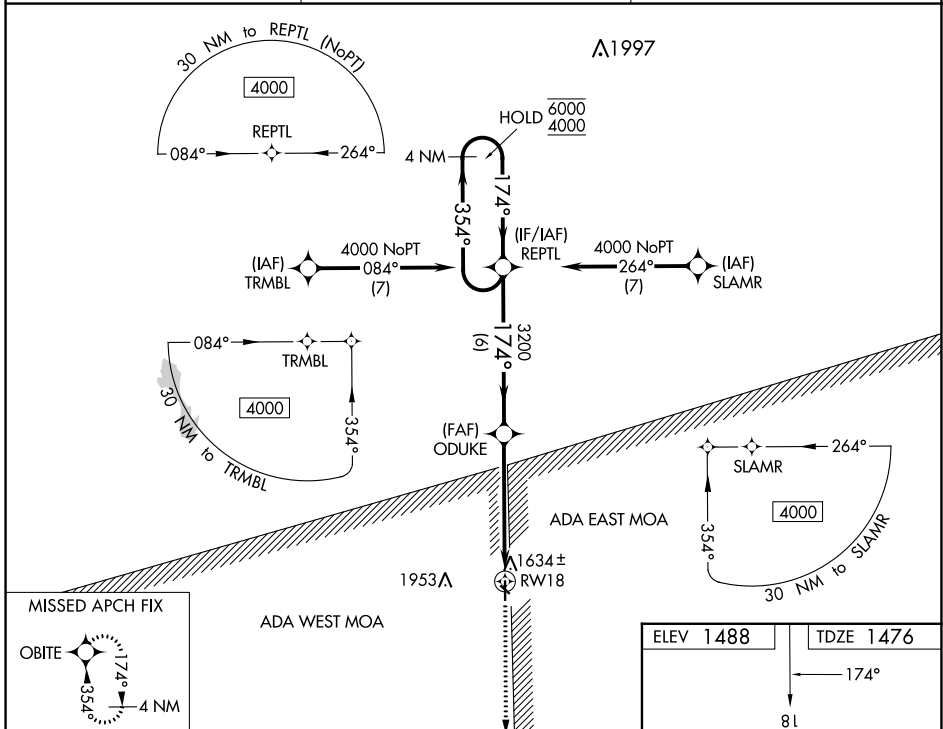


WAAS CH <b>69244</b> <b>W18A</b>	APP CRS <b>174°</b>	Rwy Idg <b>4000</b> TDZE <b>1476</b> Apt Elev <b>1488</b>
--	------------------------	---

# RNAV (GPS) RWY 18

BLOSSER MUNI (CNK)

RNP APCH-GPS.		MISSED APPROACH: Climb to 4000 direct OBITE and hold.
<p><b>⚠</b> Rwy 18 helicopter visibility reduction below 1 SM NA. For uncompensated Baro-VNAV systems, LNAV/VNAV NA below -20°C or above 54°C. Baro-VNAV and VDP NA when using Hebron Muni altimeter setting.</p>		
ASOS <b>123.825</b>	KANSAS CITY CENTER <b>134.9 363.2</b>	UNICOM <b>122.8 (CTAF) 0</b>



CATEGORY	A	B	C	D
LPV DA	1738-1	262 (300-1)		NA
LNAV/VNAV DA	1776-1	300 (300-1)		NA
LNAV MDA	1920-1	444 (500-1)		NA

NC-2, 26 DEC 2024 to 23 JAN 2025

NC-2, 26 DEC 2024 to 23 JAN 2025