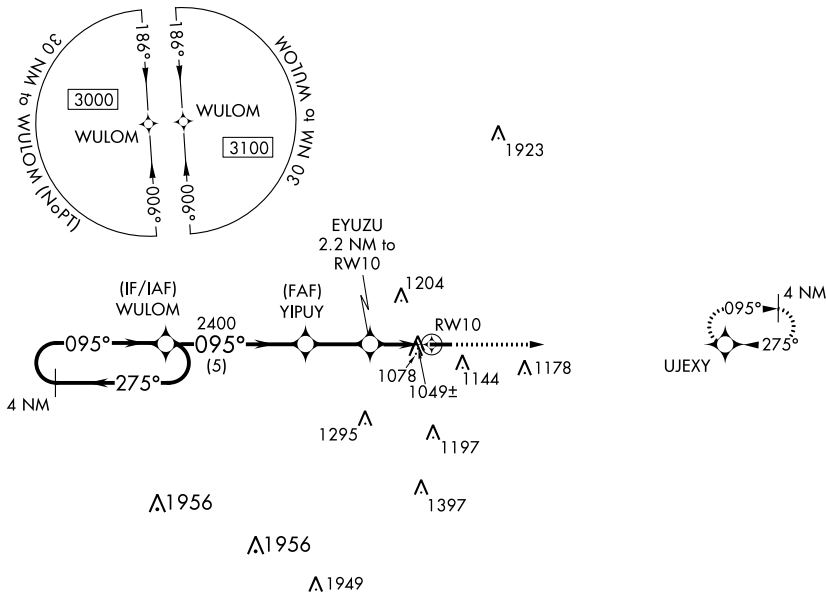


WAAS CH <b>61134</b> <b>W10A</b>	APP CRS <b>095°</b>	Rwy Idg TDZE Apt Elev	<b>4002</b> <b>920</b> <b>920</b>
--	------------------------	-----------------------------	---

# RNAV (GPS) RWY 10

MASON JEWETT FLD (TEW)

RNP APCH.		MISSED APPROACH: Climb to 3000 direct UJEXY and hold.
<p>▼ Rwy 10 helicopter visibility reduction below 1 SM NA. Straight-in Rwy 10 NA at night, Circling Rwy 10 NA at night.</p> <p>▲</p>		
AWOS-3P <b>119.425</b>	GREAT LAKES APP CON ★ <b>118.65 226.4</b>	UNICOM <b>122.7 (CTAF) 0</b>



ELEV 920	TDZE 920
----------	----------

Visual Segment - Obstacles. 3000 UJEXY

4002 X 75 RWY 10

MIRL Rwy 10-28 0  
REIL Rwy 10 and 28 0

4 NM Holding Pattern	Visual Segment - Obstacles.			3000	UJEXY
WULOM	YIPUY	EYUZU 2.2 NM to RWY 10	RWY 10		
3000	2400	1660			
	5 NM	2.3 NM	2.2 NM		
CATEGORY	A	B	C	D	
LP MDA	1300-1	380 (400-1)			NA
LNAV MDA	1380-1	460 (500-1)			NA
CIRCLING	1500-1	580 (600-1)			NA

EC-1, 26 DEC 2024 to 23 JAN 2025

EC-1, 26 DEC 2024 to 23 JAN 2025