

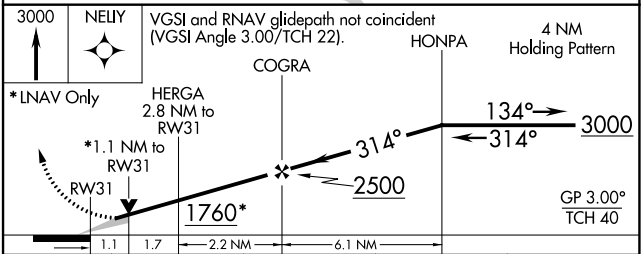
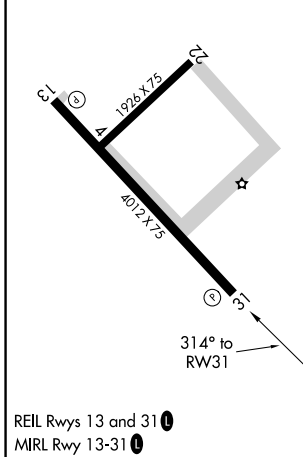
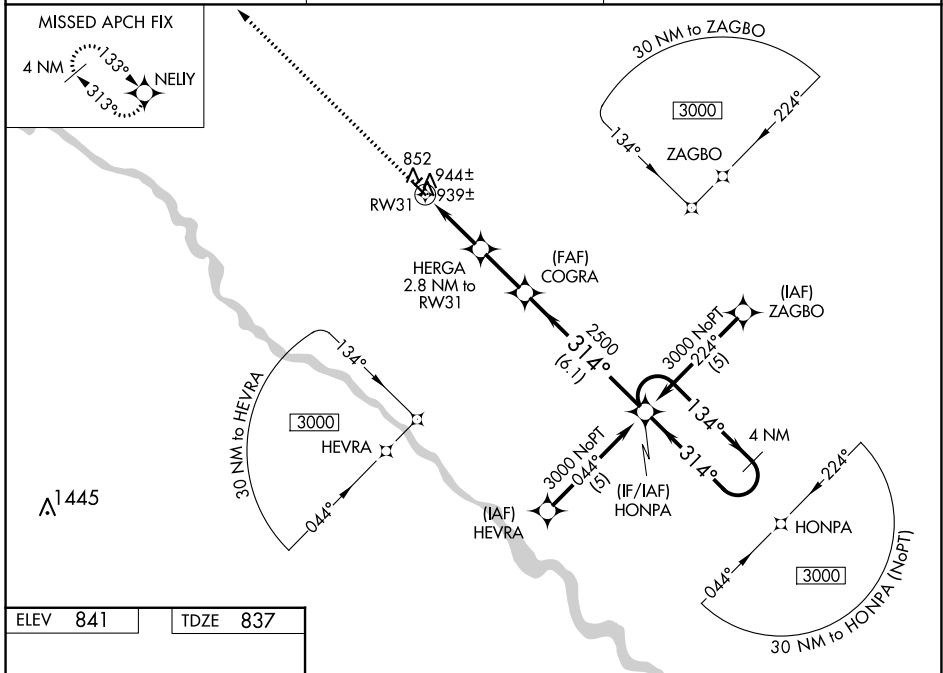
WAAS CH <b>82515</b> <b>W31A</b>	APP CRS <b>314°</b>	Rwy Idg TDZE <b>837</b> Apt Elev <b>841</b>	<b>4012</b>
--	------------------------	---	-------------

# RNAV (GPS) RWY 31

OSKALOOSA MUNI (00A)

RNP APCH.	MISSED APPROACH: Climb to 3000 direct NELY and hold.
<p>▼ When local altimeter setting not received, use Ottumwa altimeter setting and increase all DA 18 feet and all MDA 20 feet and increase LNAV/VNAV all Cats visibility ¼ mile. Baro-VNAV and VDP NA when using Ottumwa altimeter setting. For uncompensated Baro-VNAV systems, LNAV/VNAV NA below -1.6°C (4°F) or above 54°C (130°F).</p>	

AWOS-3 <b>118.625</b>	CHICAGO CENTER <b>118.15 335.575</b>	UNICOM <b>122.8 (CTAF) 0</b>
--------------------------	---	---------------------------------



CATEGORY	A	B	C	D
LPV DA	1187-1¼	350 (400-1¼)		NA
LNAV/VNAV DA	1209-1¼	372 (400-1¼)		NA
LNAV MDA	1200-1	363 (400-1)		NA
CIRCLING	1260-1 419 (500-1)	1300-1 459 (500-1)	1300-1½ 459 (500-1½)	NA

NC-3, 26 DEC 2024 to 23 JAN 2025

NC-3, 26 DEC 2024 to 23 JAN 2025