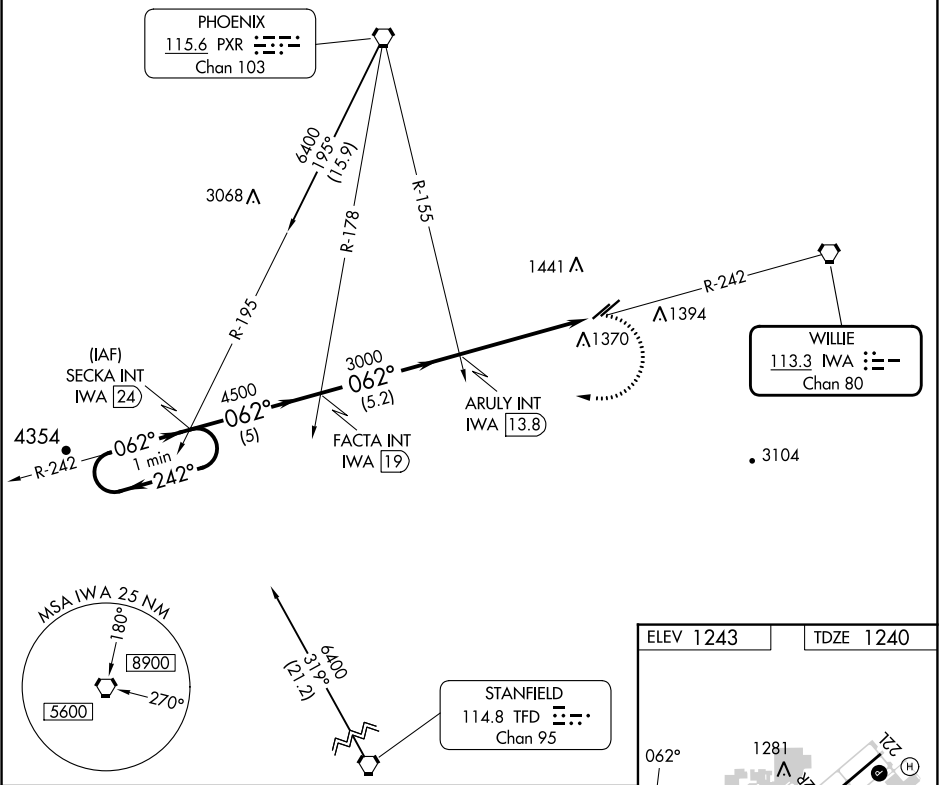


| | | |
|--|------------------------|---|
| VORTAC IWA 113.3 Chan 80 | APP CRS 062° | Rwy Idg 4870 TDZE 1240 Apt Elev 1243 |
|--|------------------------|---|

VOR RWY 4R

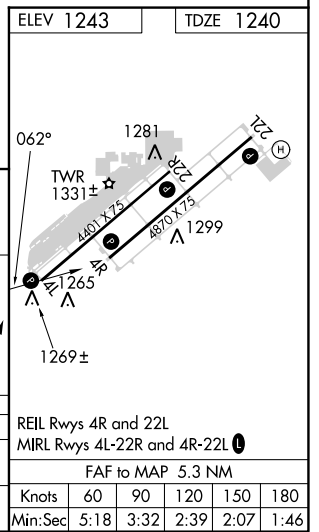
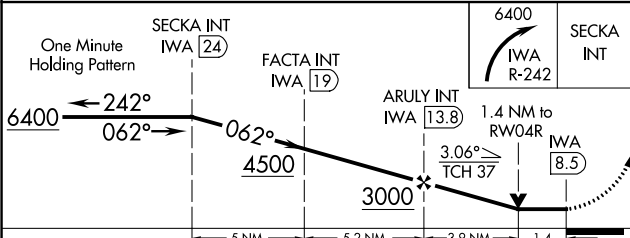
CHANDLER MUNI (CHD)

| | | | |
|--|---------------------------------------|---|----------------------------------|
| ▼ When VGSI inoperative, Circling Rwy 4L NA at night. | | MISSED APPROACH: Climbing right turn to 6400 via IWA R-242 to SECKA Int and hold. | |
| ATIS 128.325 | PHOENIX APP CON 123.7 363.0 | CHANDLER TOWER* 126.1 (CTAF) 0 (North and West) | 133.1 (South and East) |
| | | GND CON 124.4 | UNICOM 122.95 |



SW-4, 26 DEC 2024 to 23 JAN 2025

SW-4, 26 DEC 2024 to 23 JAN 2025



| CATEGORY | A | B | C | D |
|----------|-----------------------|-----------------------|-------------------------|----|
| S-4R | 1680-1 | 440 (500-1) | 1680-1¼ 440 (500-1¼) | NA |
| CIRCLING | 1720-1 477 (500-1) | 1760-1 517 (600-1) | 1760-1½ 517 (600-1½) | NA |

REIL Rwy 4R and 22L
MIRL Rwy 4L-22R and 4R-22L

FAF to MAP 5.3 NM

| | | | | | |
|---------|------|------|------|------|------|
| Knots | 60 | 90 | 120 | 150 | 180 |
| Min:Sec | 5:18 | 3:32 | 2:39 | 2:07 | 1:46 |