

WAAS CH 97519	APP CRS 174°	Rwy Idg TDZE Apt Elev	3501 1030 1030
W17A			

RNAV (GPS) RWY 17

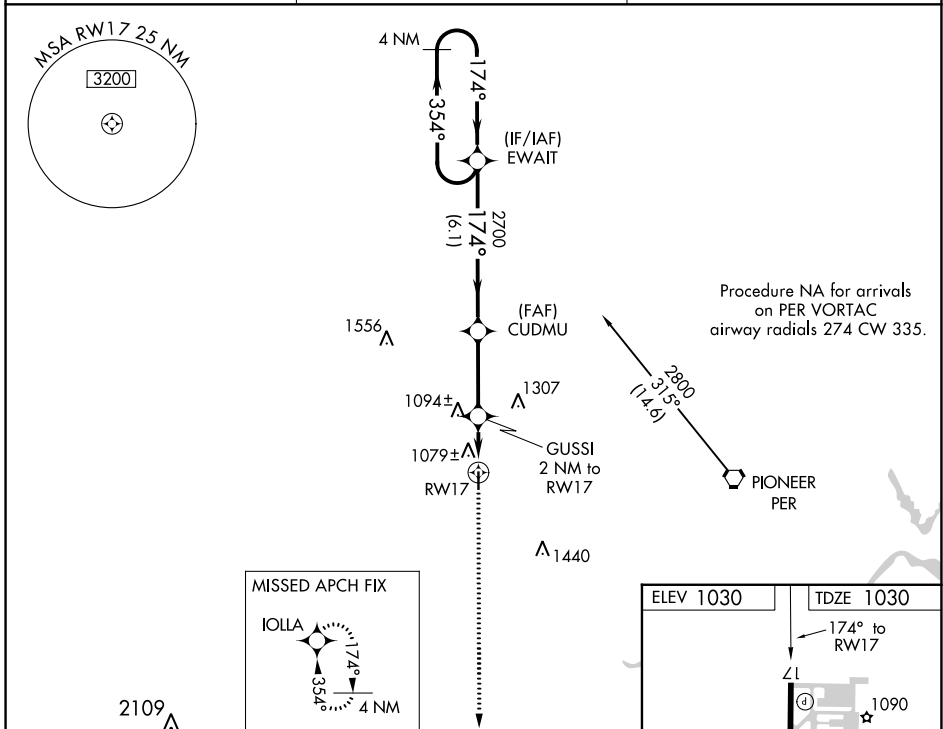
BLACKWELL-TONKAWA MUNI (BKN)

RNP APCH.

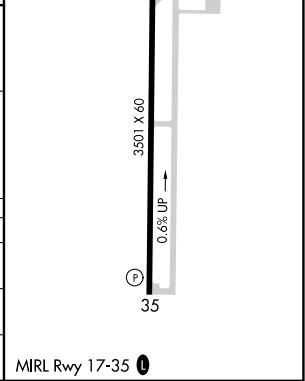
⚠ For uncompensated Baro-VNAV systems, LNAV/VNAV NA below -17°C or above 54°C. Rwy 17 helicopter visibility reduction below 3/4 SM NA. When local altimeter setting not received, use Ponca City altimeter setting and increase all DA 31 feet and all MDA 40 feet and LNAV Cat C visibility 1/4 mile. Baro-VNAV NA when using Ponca City altimeter setting.

MISSED APPROACH: Climb to 2800 direct IOLLA and hold.

AWOS-3PT 120.575	KANSAS CITY CENTER 127.8 319.1	UNICOM 122.8 (CTAF) 0
----------------------------	--	---------------------------------



4 NM Holding Pattern		EWAIT		VGSi and RNAV glidepath not coincident (VGSi Angle 3.00/40).		2800		IOLLA	
2800 ← 354°		→ 174°		174°		2700		*LNNAV only	
GP 3.00° TCH 40				*1700		RWY 17			
		6.1 NM		3.1 NM		2 NM			
CATEGORY	A	B	C	D					
LPV DA	1280-1 250 (300-1)		NA						
LNAV/VNAV DA	1376-1¼ 346 (400-1¼)		NA						
LNAV MDA	1400-1 370 (400-1)		NA						



SC-1, 26 DEC 2024 to 23 JAN 2025

SC-1, 26 DEC 2024 to 23 JAN 2025