

RADAR and DME required.

**TOP ALTITUDE:
ASSIGNED BY ATC**

LONE STAR DEP CON
135.975 379.9
CTAF
122.7

(KING4.TTT) 24305
KINGDOM FOUR DEPARTURE

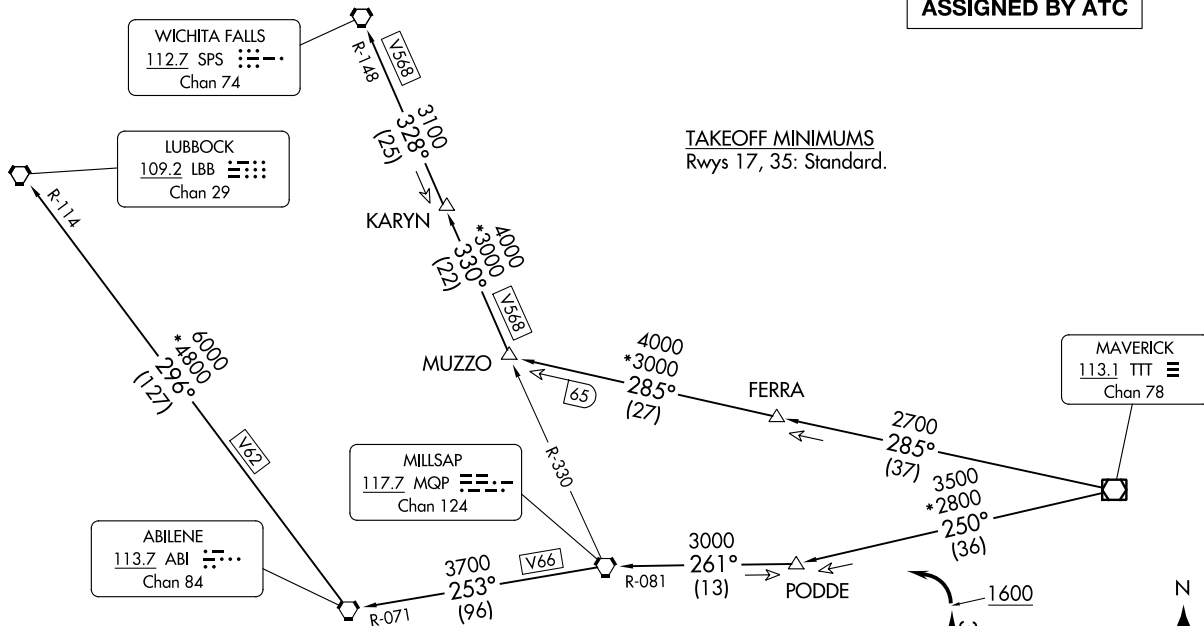
AL-6497 (FAA)

PARKER COUNTY (WEA)
WEATHERFORD, TEXAS

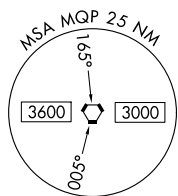
TAKEOFF MINIMUMS
Rwys 17, 35: Standard.

KINGDOM FOUR DEPARTURE
(KING4.TTT) 25JAN24

WEATHERFORD, TEXAS
PARKER COUNTY (WEA)



- NOTE: LUBBOCK Transition: For all aircraft overflying the MQP VORTAC westbound or direct.
- NOTE: MILLSAP Transition: For all aircraft overflying the MQP VORTAC westbound or direct.
- NOTE: PODDE Transition: ATC assigned.
- NOTE: WICHITA FALLS Transition: For all aircraft landing within the Wichita Falls terminal area or overflying the SPS VORTAC.
- NOTE: For all aircraft requesting 17000 and below.



NOTE: Chart not to scale.

(CONTINUED ON FOLLOWING PAGE)

KINGDOM FOUR DEPARTURE



DEPARTURE ROUTE DESCRIPTION

TAKEOFF RUNWAY 35: Climb on heading 355° to 1600 before turning left.

When entering controlled airspace, fly assigned heading for RADAR vectors to appropriate route. Maintain ATC assigned altitude.

LUBBOCK TRANSITION (KING4.LBB): From over TTT VOR/DME on TTT R-250 to PODDE, then on MQP R-081 to MQP VORTAC, then on MQP R-253 and ABI R-071 to ABI VORTAC, then on ABI R-296 and LBB R-114 to LBB VORTAC.

MILLSAP TRANSITION (KING4.MQP): From over TTT VOR/DME on TTT R-250 to PODDE, then on MQP R-081 to MQP VORTAC.

PODDE TRANSITION (KING4.PODDE): From over TTT VOR/DME on TTT R-250 to PODDE.

WICHITA FALLS TRANSITION (KING4.SPS): From over TTT VOR/DME on TTT R-285 to MUZZO, then on MQP R-330 and SPS R-148 to KARYN, then on SPS R-148 to SPS VORTAC.

SC-2, 26 DEC 2024 to 23 JAN 2025

SC-2, 26 DEC 2024 to 23 JAN 2025