

WAAS CH 99325 W22A	APP CRS 220°	Rwy Idg 5007 TDZE 69 Apt Elev 70
--	------------------------	---

RNAV (GPS) RWY 22

SUFFOLK EXEC (SF'Q)

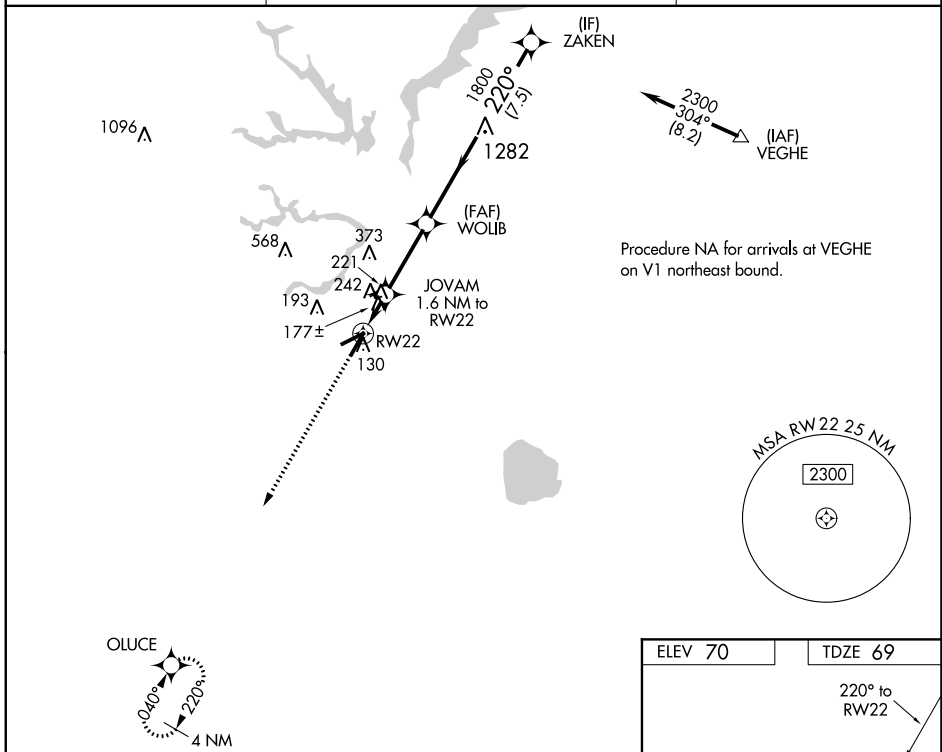
⚠ DME/DME RNP-0.3 NA. Helicopter visibility reduction below 3/4 SM NA. VDP NA with Norfolk Intl altimeter setting. When local altimeter setting not received, use Norfolk Intl altimeter setting and increase all MDA 60 feet, and increase LP Cats C and D visibility 1/4 mile and LNAV Cats C and D visibility 1/8 mile.

MISSED APPROACH:
Climb to 2000 direct OLUCE and hold.

AWOS-3
119.375

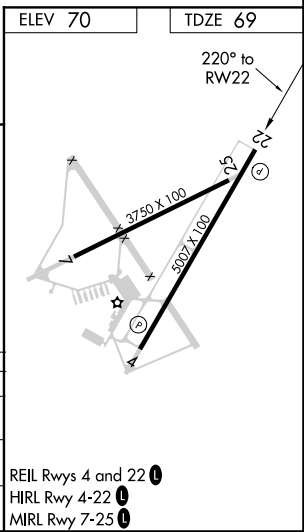
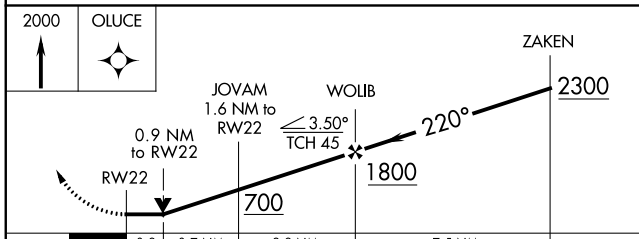
NORFOLK APP CON
127.9 269.425

UNICOM
122.7 (CTAF) ①



NE-3, 26 DEC 2024 to 23 JAN 2025

NE-3, 26 DEC 2024 to 23 JAN 2025



CATEGORY	A	B	C	D
LP MDA	440-1		371 (400-1)	
LNAV MDA	500-1	431 (500-1)	500-1 1/4	431 (500-1 1/4)
C CIRCLING	500-1 430 (500-1)	560-1 490 (500-1)	680-1 3/4 610 (700-1 3/4)	680-2 610 (700-2)

REIL Rwy 4 and 22 ①
HIRL Rwy 4-22 ①
MIRL Rwy 7-25 ①