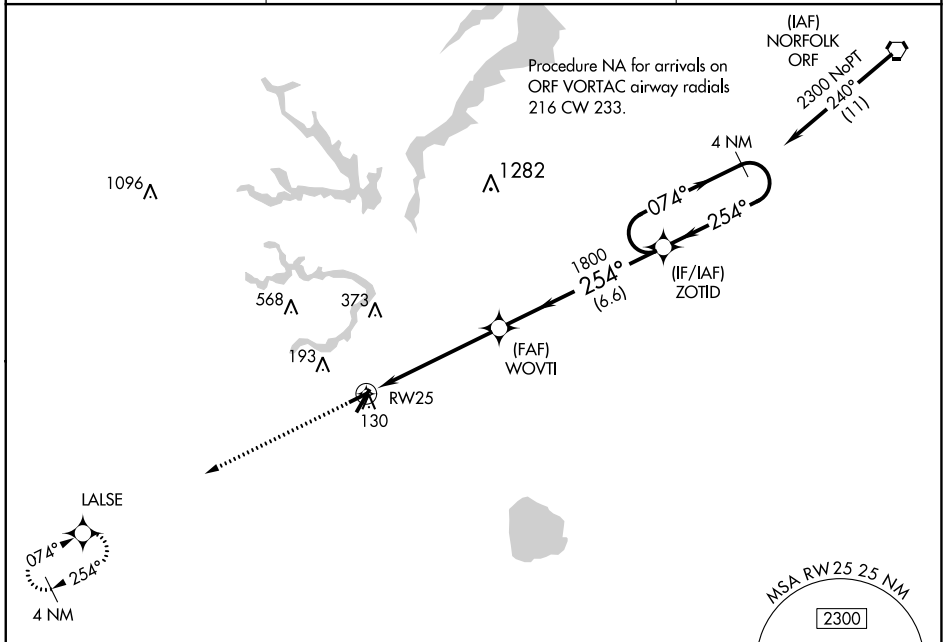


APP CRS	Rwy Idg	3750
254°	TDZE	69
	Apt Elev	70

RNAV (GPS) RWY 25

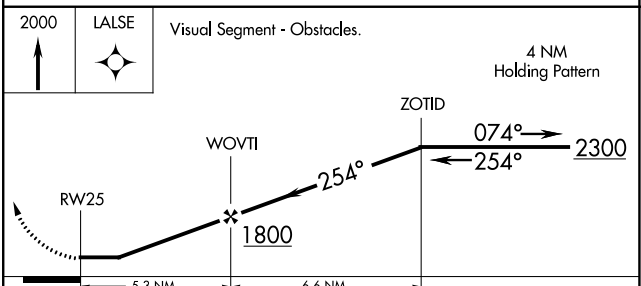
SUFFOLK EXEC (SFQ)

<p>⚠ DME/DME RNP-0.3 NA. Helicopter visibility reduction below 1 SM NA. ⚠ When local altimeter setting not received, use Norfolk Intl altimeter setting and increase all MDA 60 feet.</p>		<p>MISSED APPROACH: Climb to 2000 direct LALSE and hold.</p>
<p>AWOS-3 119.375</p>	<p>NORFOLK APP CON 127.9 269.425</p>	<p>UNICOM 122.7 (CTAF) 📻</p>



NE-3, 26 DEC 2024 to 23 JAN 2025

NE-3, 26 DEC 2024 to 23 JAN 2025



CATEGORY	A	B	C	D
LNAV MDA	480-1	411 (500-1)	NA	
C CIRCLING	500-1 430 (500-1)	560-1 490 (500-1)	NA	

SUFFOLK, VIRGINIA
Amdt 1B 02MAR17

36°41'N-76°36'W

RNAV (GPS) RWY 25

SUFFOLK EXEC (SFQ)