

APP CRS 168°	Rwy Idg 4000
	TDZE 484
	Apt Elev 484

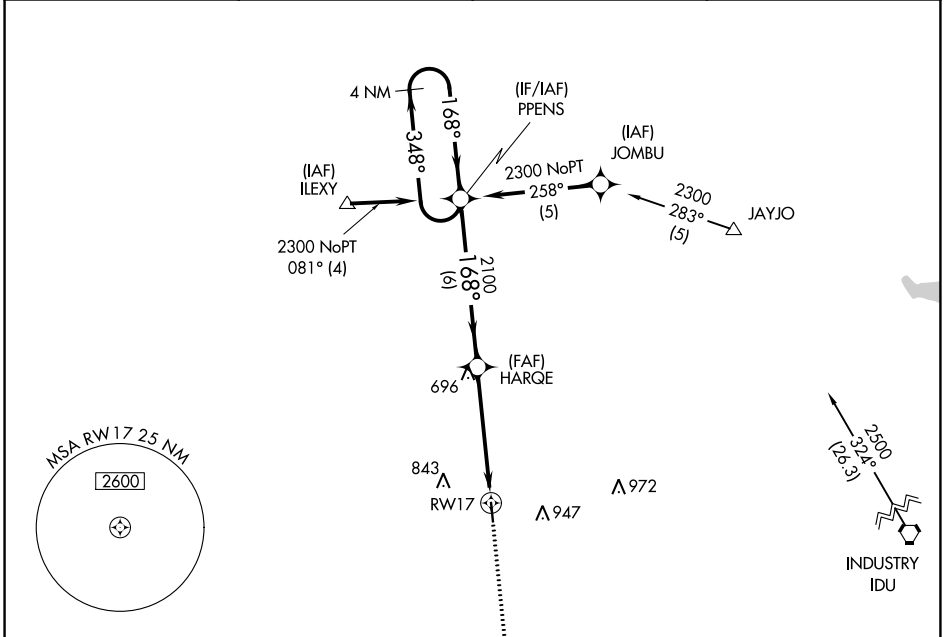
RNAV (GPS) RWY 17

GIDDINGS-LEE COUNTY (GYB)

⚠ DME/DME RNP-0.3 NA. Helicopter visibility reduction below 1 SM NA.
⚠ Procedure NA at night. When local altimeter setting not received, use Austin-Bergstrom Intl altimeter setting and increase all MDA 100 feet; increase visibility Cat C ¼ SM.

MISSED APPROACH:
 Climb to 2500 direct RAMOS and hold.

AWOS-3 119.225	AUSTIN APP CON 127.225 317.65	UNICOM 123.05 (CTAF)
---------------------------------	--	---------------------------------------



SC-5, 26 DEC 2024 to 23 JAN 2025

SC-5, 26 DEC 2024 to 23 JAN 2025

