

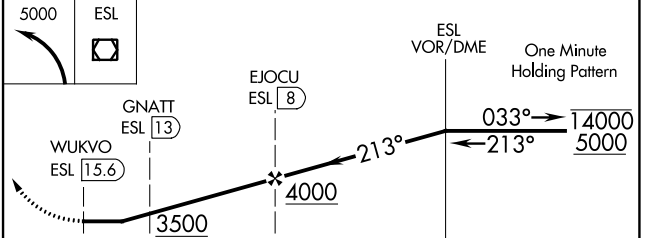
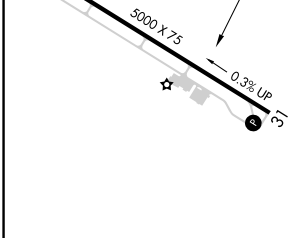
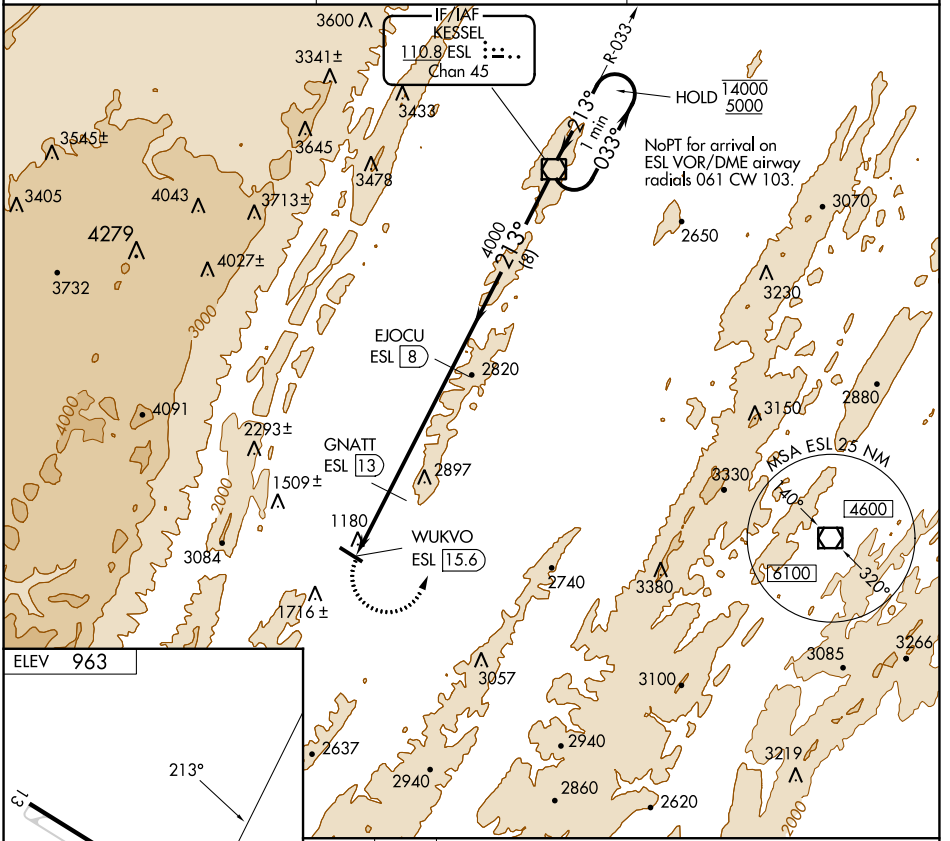
VOR/DME ESL <b>110.8</b> Chan <b>45</b>	APP CRS <b>213°</b>	Rwy Idg TDZE Apt Elev	<b>N/A</b> <b>N/A</b> <b>963</b>
---	------------------------	-----------------------------	--

# VOR/DME-A

GRANT COUNTY (W99)

**MISSED APPROACH:** Climbing left turn to 5000 direct ESL VOR/DME and hold.

AWOS-3 <b>124.475</b>	WASHINGTON CENTER <b>133.55 322.55</b>	UNICOM <b>122.8 (CTAF)</b>
--------------------------	---	-------------------------------



CATEGORY	A	B	C	D
<b>CIRCLING</b>	3100-1¼ 2137 (2200-1¼)	3100-1½ 2137 (2200-1½)	NA	

NE-4, 26 DEC 2024 to 23 JAN 2025

NE-4, 26 DEC 2024 to 23 JAN 2025