

WAAS CH <b>65937</b> <b>W21A</b>	APP CRS <b>212°</b>	Rwy Idg TDZE Apt Elev	<b>5500</b> <b>164</b> <b>164</b>
--	------------------------	-----------------------------	---

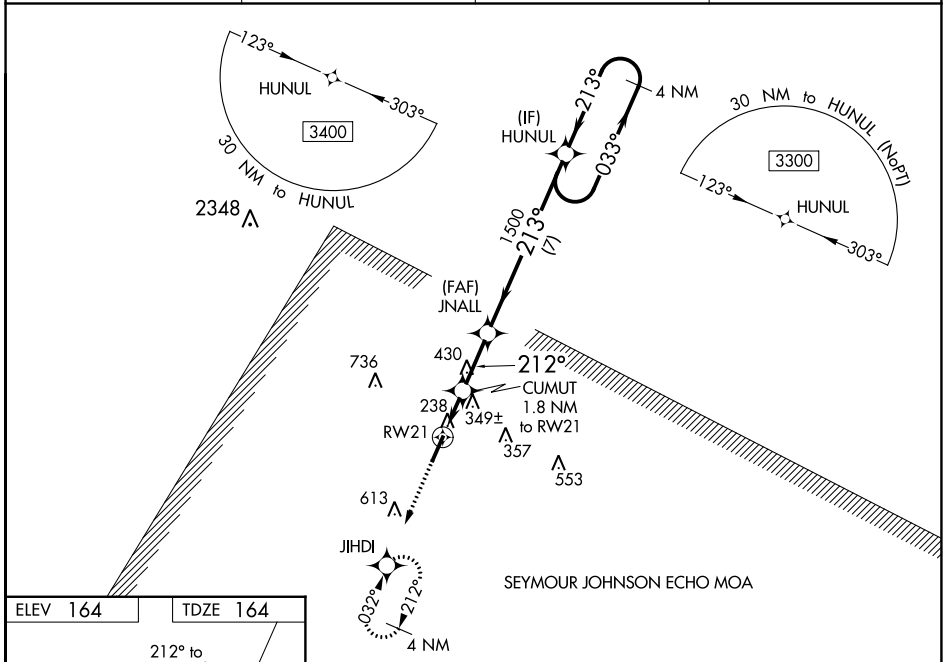
# RNAV (GPS) RWY 21

JOHNSTON RGNL (JNX)

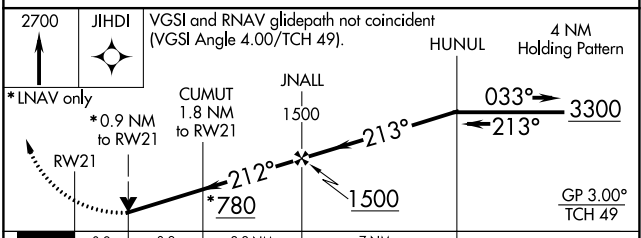
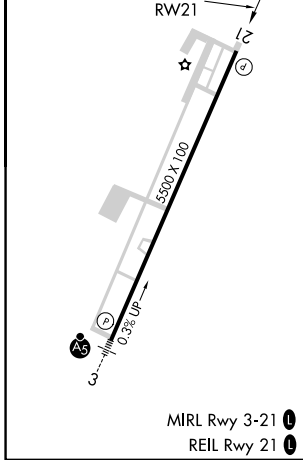
**⚠** For uncompensated Baro-VNAV systems, LNAV/VNAV NA below -15°C (5°F) or above 54°C (130°F). DME/DME RNP-0.3 NA. When local altimeter setting not received, use Erwin altimeter setting and increase all DA 50 feet and all MDA 60 feet; increase LPV all Cats and Circling Cat C visibility ¼ mile; increase LNAV/VNAV all Cats and LNAV Cats C/D visibility ⅓ mile. Baro-VNAV and VDP NA with Erwin altimeter setting. Helicopter visibility reduction below ¾ SM NA.

**MISSED APPROACH:** Climb to 2700 direct JIHDI and hold, continue climb-in-hold to 2700.

AWOS-3 <b>120.225</b>	RALEIGH APP CON <b>125.3 353.675</b>	GCO <b>135.075</b>	UNICOM <b>122.725 (CTAF)</b> <b>📻</b>
--------------------------	---	-----------------------	--



ELEV <b>164</b>	TDZE <b>164</b>
-----------------	-----------------



CATEGORY	A	B	C	D
LPV DA		518-1 1/8	354 (400-1 1/8)	
LNAV/VNAV DA		666-1 3/4	502 (600-1 3/4)	
LNAV MDA	600-1	436 (500-1)	600-1 1/4	436 (500-1 1/4)
<b>C</b> CIRCLING	660-1	496 (500-1)	920-2 1/4 756 (800-2 1/4)	1100-3 936 (1000-3)

SE-2, 26 DEC 2024 to 23 JAN 2025

SE-2, 26 DEC 2024 to 23 JAN 2025