

LOC/DME I-PQQ <b>108.9</b> Chan 26	APP CRS <b>305°</b>	Rwy Idg TDZE Apt Elev	<b>5000</b> <b>1016</b> <b>1022</b>
--	------------------------	-----------------------------	---

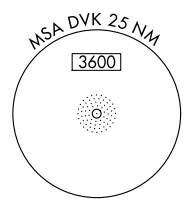
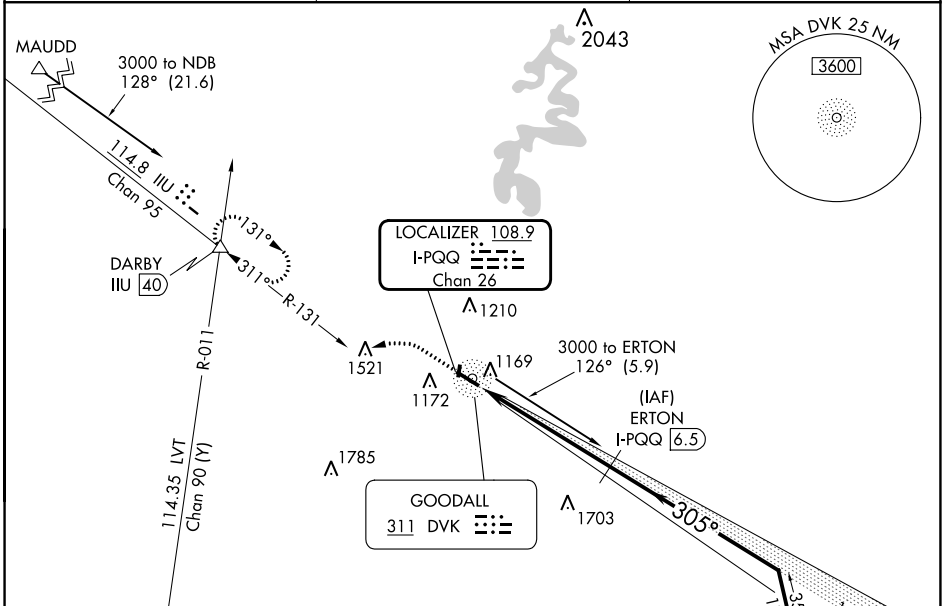
# LOC RWY 31

STUART POWELL FLD (DVK)

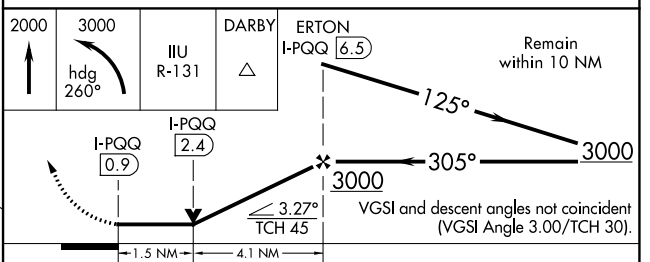
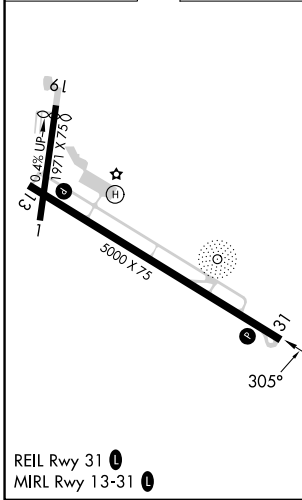
DME required.  
ADF or RADAR required for procedure entry.

MISSED APPROACH: Climb to 2000 then climbing left turn to 3000 on heading 260° and IJU VORTAC R-131 to DARBY INT and hold.

AWOS-3 <b>128.325</b>	LEXINGTON APP CON <b>120.15 259.3</b>	UNICOM <b>122.8 (CTAF)</b>
--------------------------	--	-------------------------------



ELEV 1022	TDZE 1016
-----------	-----------



CATEGORY	A	B	C	D
S-31	1520-1	504 (500-1)	1520-1 <sup>3</sup> / <sub>8</sub>	504 (500-1 <sup>3</sup> / <sub>8</sub> )
<input checked="" type="checkbox"/> CIRCLING	1520-1 498 (500-1)	1700-1 678 (700-1)	1720-2 698 (700-2)	1840-2 <sup>3</sup> / <sub>4</sub> 818 (900-2 <sup>3</sup> / <sub>4</sub> )

SE-1, 26 DEC 2024 to 23 JAN 2025

SE-1, 26 DEC 2024 to 23 JAN 2025