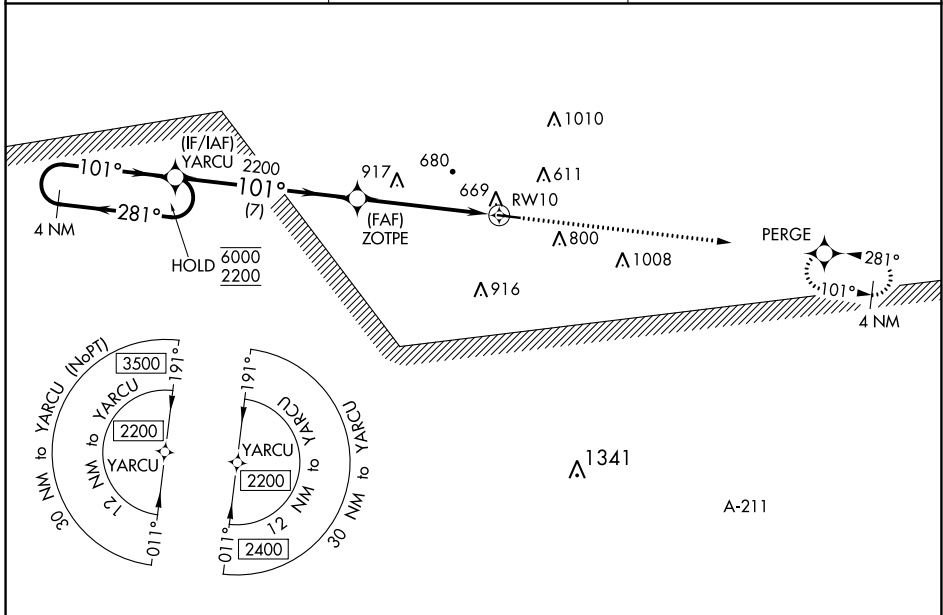


WAAS CH 53436 W10A	APP CRS 101°	Rwy Idg TDZE Apt Elev	4732 434 435
--	------------------------	-----------------------------	---

RNAV (GPS) RWY 10

CLAYTON MUNI (11A)

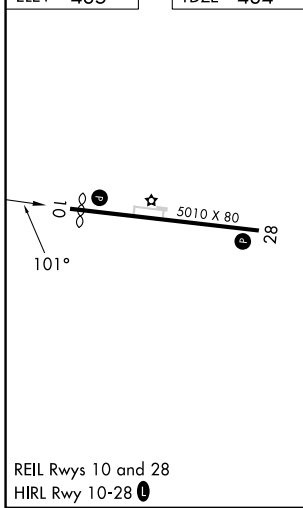
RNP APCH - GPS.		MISSED APPROACH: Climb to 2200 direct PERGE and hold.
▽ Rwy 10 helicopter visibility reduction below 3/4 SM NA. Baro-VNAV NA. ▲ NA Use Eufaula altimeter setting; when not received, use Troy altimeter setting.		
EUF ASOS 128.325	CAIRNS APP CON ★ 121.1 319.25	CTAF 122.90



SE-4, 26 DEC 2024 to 23 JAN 2025

SE-4, 26 DEC 2024 to 23 JAN 2025

ELEV 435	TDZE 434
----------	----------



VGSI and RNAV glidepath not coincident (VGSI Angle 3.20/TCH 30).				2200	PERGE
4 NM Holding Pattern YARCU		ZOTPE		2200 2200	
6000 ← 281° 2200 ← 101°		2200			
GP 3.00° TCH 40		7 NM		5.5 NM	
CATEGORY	A	B	C	D	
LPV DA	781-1 347 (400-1)				
LNAV/VNAV DA	1115-2½ 681 (700-2½)				
LNAV MDA	1180-1 746 (800-1)	1180-1¼ 746 (800-1¼)	1180-2	746 (800-2)	
CIRCLING	1180-1 745 (800-1)	1180-1¼ 745 (800-1¼)	1180-2¼ 745 (800-2¼)	1300-2¾ 865 (900-2¾)	