

WAAS CH 82536 W28A	APP CRS 281°	Rwy Idg TDZE 435 Apt Elev 435	5010
----------------------------------------	------------------------	---------------------------------------------------	-------------

RNAV (GPS) RWY 28

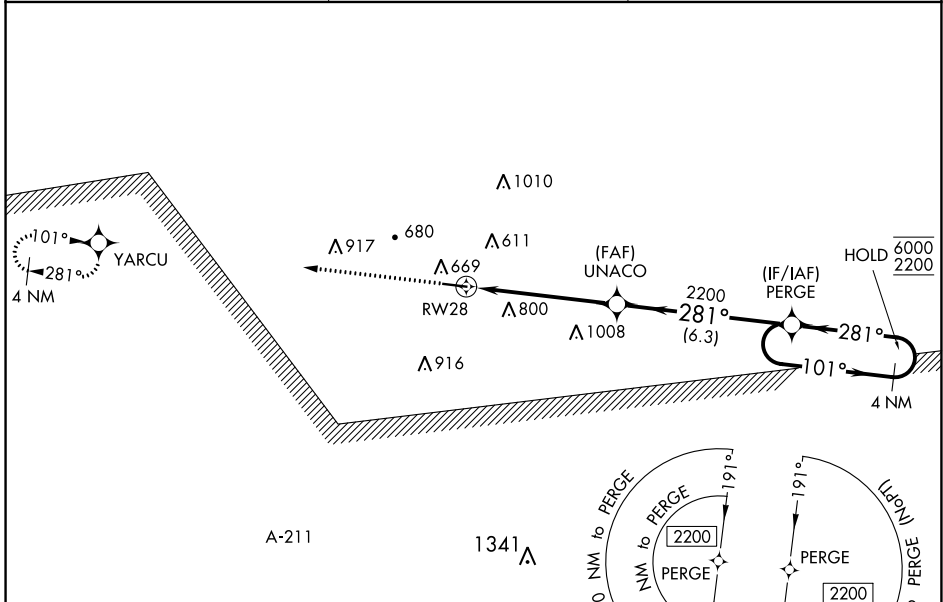
CLAYTON MUNI (11A)

RNP APCH - GPS.

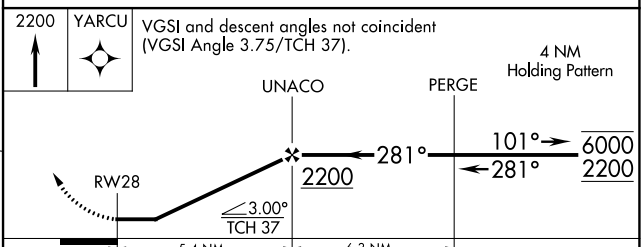
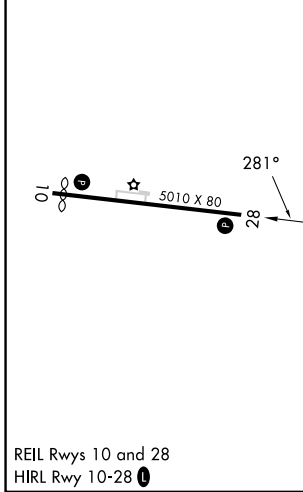
▽ Rwy 28 helicopter visibility reduction below 3/4 SM NA. Use Eufaula altimeter setting;
▲ NA when not received, use Troy altimeter setting.

MISSED APPROACH:
 Climb to 2200 direct YARCU and hold.

EUF ASOS 128.325	CAIRNS APP CON ★ 121.1 319.25	CTAF 122.90
----------------------------	-----------------------------------------	-----------------------



ELEV 435	TDZE 435
----------	----------



2200 YARCU	VGSi and descent angles not coincident (VGSi Angle 3.75/TCH 37).			
UNACO	PERGE			
RWY 28	4 NM Holding Pattern			
	5.4 NM		6.3 NM	
CATEGORY	A	B	C	D
LP MDA	1140-1	705 (800-1)	1140-2	705 (800-2)
LNAV MDA	1140-1	705 (800-1)	1140-2	705 (800-2)
☑ CIRCLING	1180-1	745 (800-1)	1180-2 1/4 745 (800-2 1/4)	1300-2 3/4 865 (900-2 3/4)

SE-4, 26 DEC 2024 to 23 JAN 2025

SE-4, 26 DEC 2024 to 23 JAN 2025