

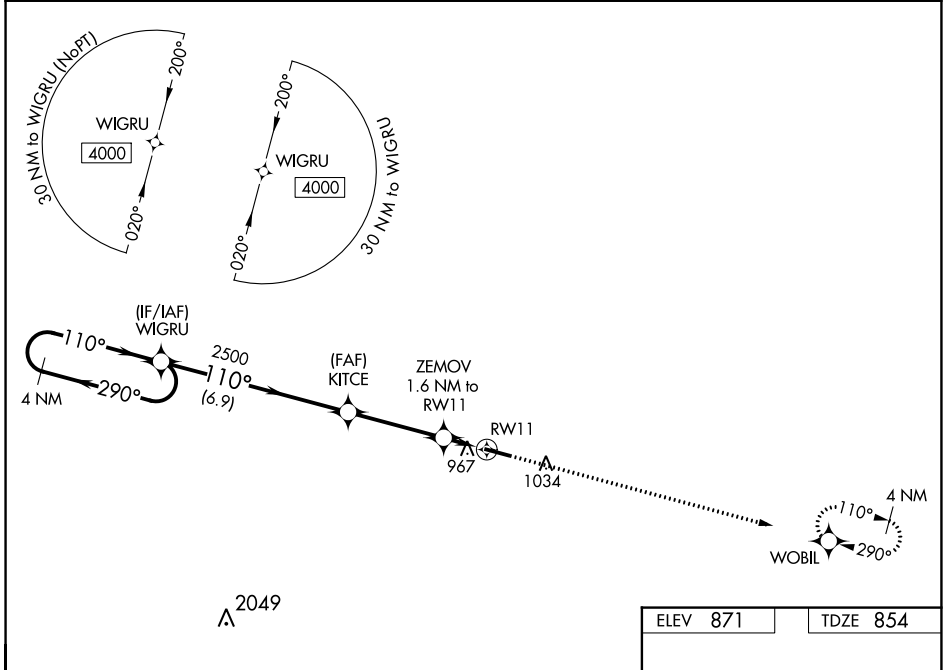
WAAS CH <b>45722</b> <b>W11A</b>	APP CRS <b>110°</b>	Rwy Idg <b>4876</b> TDZE <b>854</b> Apt Elev <b>871</b>
--	------------------------	---

# RNAV (GPS) RWY 11

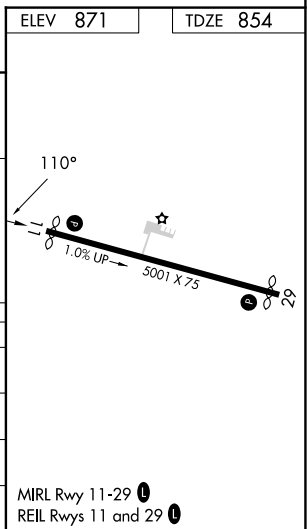
LEBANON SPRINGFIELD-GEORGE HOERTER FLD (6I2)

RNP APCH. ▼ For uncompensated Baro-VNAV systems, LNAV/VNAV NA below -16°C or above 54°C. ▲ When local altimeter setting not received, use Danville altimeter setting and increase all DA 74 feet and all MDA 80 feet. Increase LPV, LNAV/VNAV, and Circling Cat D visibility ½ mile and LNAV Cats C/D ⅓ mile. Baro-VNAV NA when using Danville altimeter setting.	MISSED APPROACH: Climb to 4000 direct WOBIL and hold, continue climb-in-hold to 4000.
---	---

AWOS-3P <b>119.725</b>	LOUISVILLE APP CON <b>132.075 327.0</b>	UNICOM <b>122.8 (CTAF) 0</b>
---------------------------	--	---------------------------------



4 NM Holding Pattern	WIGRU		4000	WOBIL
	←290°	→110°	↑	✦
GP 3.00° TCH 36	←290°	→110°	2500	*LNAV only
	←290°	→110°	*1360	
	←290°	→110°		
	←290°	→110°		
CATEGORY	A	B	C	D
LPV DA		1104-1	250 (300-1)	
LNAV/VNAV DA		1159-1⅓	305 (300-1⅓)	
LNAV MDA		1220-1	366 (400-1)	
ⓐ CIRCLING	1320-1 449 (500-1)	1340-1 469 (500-1)	1360-1½ 489 (500-1½)	1500-2 629 (700-2)



# RNAV (GPS) RWY 11

SE-1, 26 DEC 2024 to 23 JAN 2025

SE-1, 26 DEC 2024 to 23 JAN 2025