

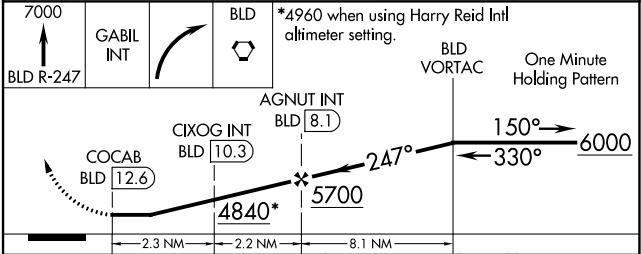
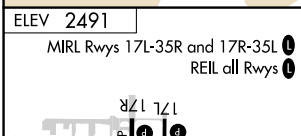
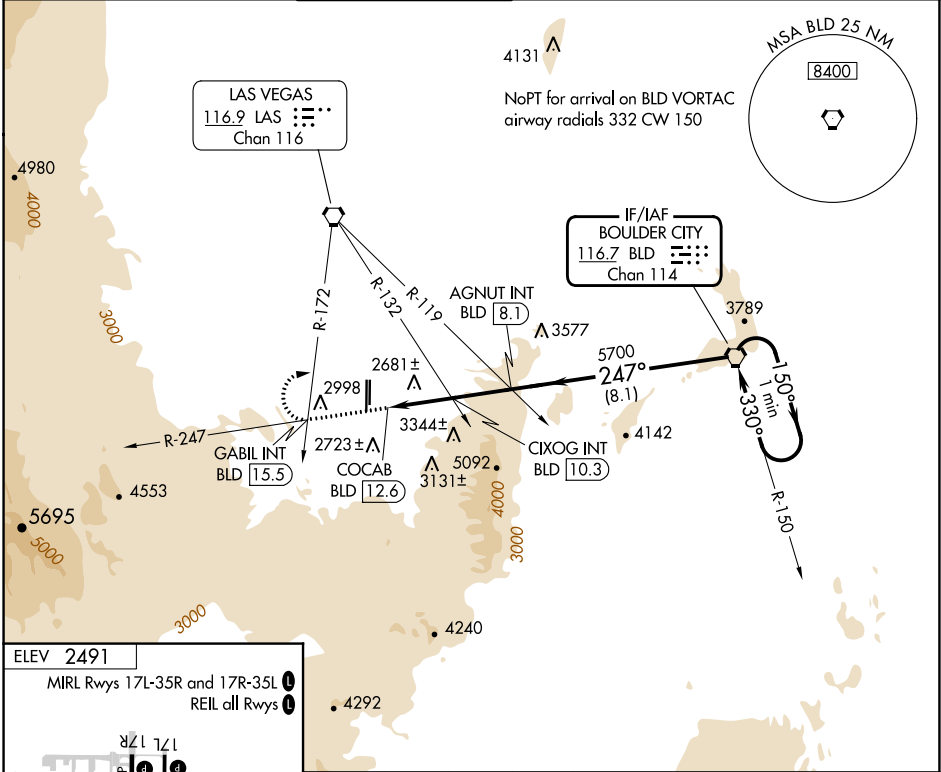
VORTAC BLD 116.7 Chan 114	APP CRS 247°	Rwy Idg TDZE Apt Elev N/A N/A 2491
---	------------------------	--

VOR-C
HENDERSON EXEC (HND)

⚠ Circling to Rwy 35L NA at night.
⚠ When local altimeter setting not received, use Harry Reid Intl altimeter setting and increase all MDAs 60 feet.

MISSED APPROACH: Climb to 7000 on BLD VORTAC R-247 to GABIL INT/BLD 15.5 DME and right turn direct BLD VORTAC and hold.

ATIS 120.775	LAS VEGAS APP CON 125.475 307.25	HENDERSON TOWER* 125.1(CTAF)	GND CON 127.8	CLNC DEL 118.425	CLNC DEL 125.475 (when twr closed)	UNICOM 122.95
------------------------	--	--	-------------------------	----------------------------	---	-------------------------



CATEGORY	A	B	C	D
CIRCLING	4840-1¼ 2349 (2400-1¼)	4840-1½ 2349 (2400-1½)	4840-3 2349 (2400-3)	NA
CIXOG FIX MINIMUMS (DUAL VOR RECEIVERS OR DME REQUIRED)				
CIRCLING	3700-1¼ 1209 (1300-1¼)	3700-1½ 1209 (1300-1½)	3700-3 1209 (1300-3)	NA

SW-4, 26 DEC 2024 to 23 JAN 2025

SW-4, 26 DEC 2024 to 23 JAN 2025