

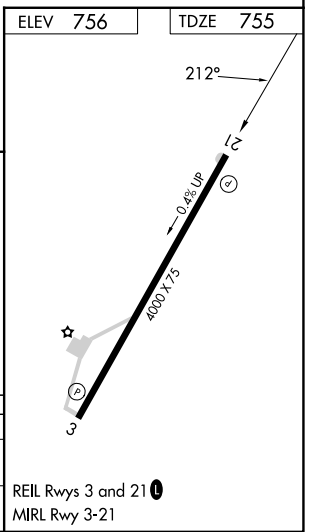
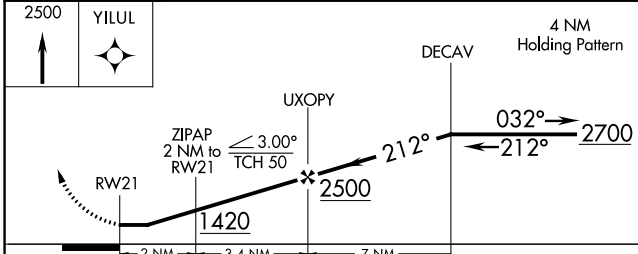
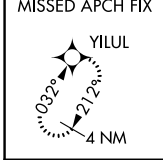
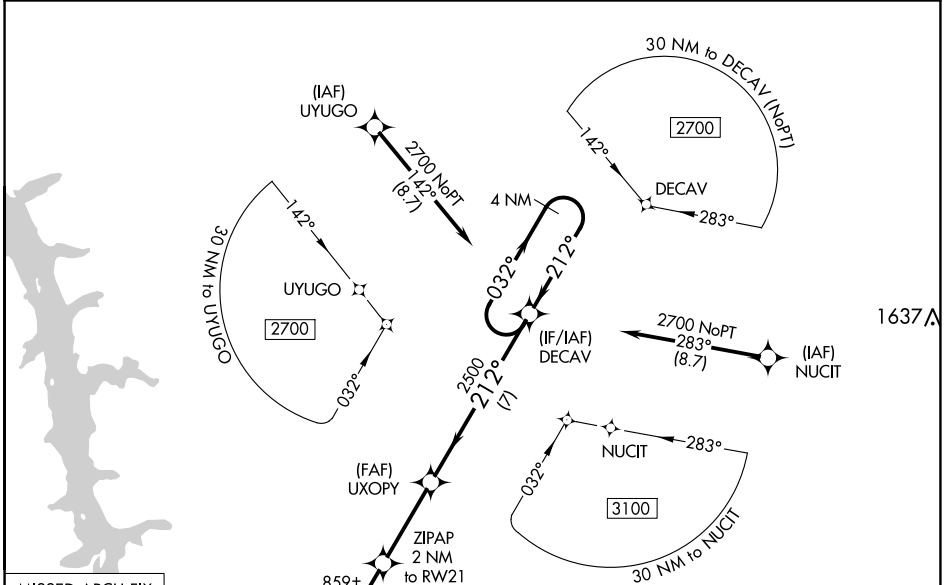
WAAS CH 97422 W21A	APP CRS 212°	Rwy Idg TDZE Apt Elev	4000 755 756
--	------------------------	-----------------------------	---

RNAV (GPS) RWY 21

HUMPHREYS COUNTY (ØM5)

RNP APCH.	<p>When local altimeter setting not received, use Nashville Intl altimeter setting: increase all MDA 160 feet and visibility Cat C and D ½ SM. Procedure NA at night. Rwy 21 helicopter visibility reduction below 1 SM NA.</p>	MISSED APPROACH: Climb to 2500 direct YILUL and hold.
-----------	---	---

MEMPHIS CENTER 125.85 379.25	UNICOM 122.8 (CTAF) 0
--	---------------------------------



CATEGORY	A	B	C	D
LP MDA	1120-1		365 (400-1)	
LNAV MDA	1140-1	385 (400-1)	1140-1½	385 (400-1½)

REIL Rws 3 and 21
MIRL Rwy 3-21

SE-1, 26 DEC 2024 to 23 JAN 2025

SE-1, 26 DEC 2024 to 23 JAN 2025