

WAAS CH 82600 W11A	APP CRS 109°	Rwy Idg 6000 TDZE 310 Apt Elev 310
--	------------------------	---

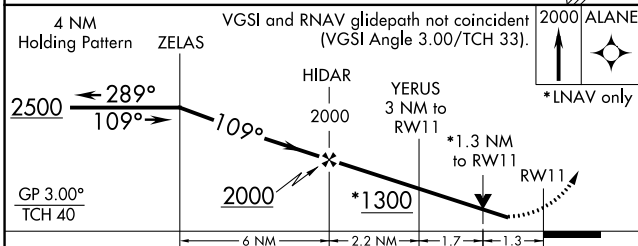
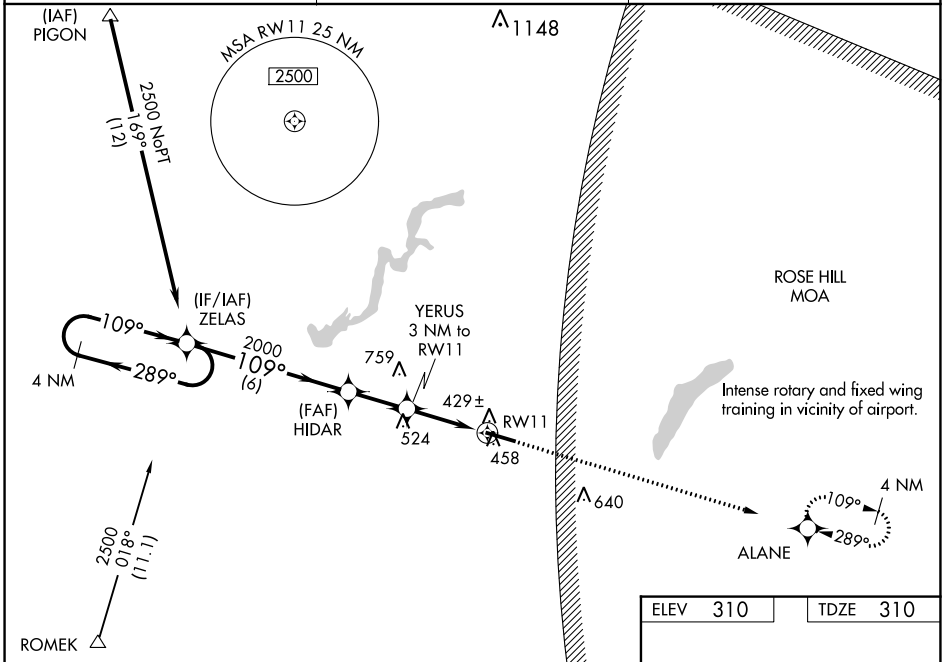
RNAV (GPS) RWY 11

SOUTH ALABAMA RGNL AT BILL BENTON FLD (79J)

⚠ For uncompensated Baro-VNAV systems, LNAV/VNAV NA below -15°C (5°F) or above 54°C (130°F). DME/DME RNP-0.3 NA. Helicopter visibility reduction below ¾ SM NA. When local altimeter setting not received, use Cairns AAF (Fort Novosel) altimeter setting and increase all DA 82 feet, all MDA 100 feet. Increase all LPV and LNAV/VNAV visibilities ¾ mile all Cats, LNAV and Circling Cats C and D ¼ mile. Baro-VNAV and VDP NA when using Cairns AAF (Fort Novosel) altimeter setting.

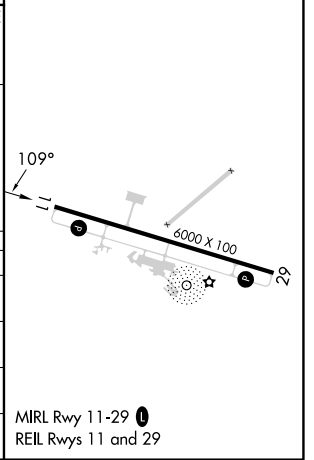
MISSED APPROACH: Climb to 2000 direct ALANE and hold.

ASOS 134.875	CAIRNS APP CON ★ 133.45 239.275	UNICOM 122.8 (CTAF) 0
------------------------	---	---------------------------------



ELEV 310	TDZE 310
----------	----------

CATEGORY	A	B	C	D
LPV DA	615-1 305 (400-1)			
LNAV/VNAV DA	655-1½ 345 (400-1½)			
LNAV MDA	760-1	450 (500-1)	760-1¾	450 (500-1½)
CIRCLING	820-1	510 (600-1)	860-1½	940-2 630 (700-2)



SE-4, 26 DEC 2024 to 23 JAN 2025

SE-4, 26 DEC 2024 to 23 JAN 2025

RNAV (GPS) RWY 11