

WAAS CH 60929 W29A	APP CRS 289°	Rwy Idg TDZE Apt Elev	6000 308 310
--	------------------------	-----------------------------	---

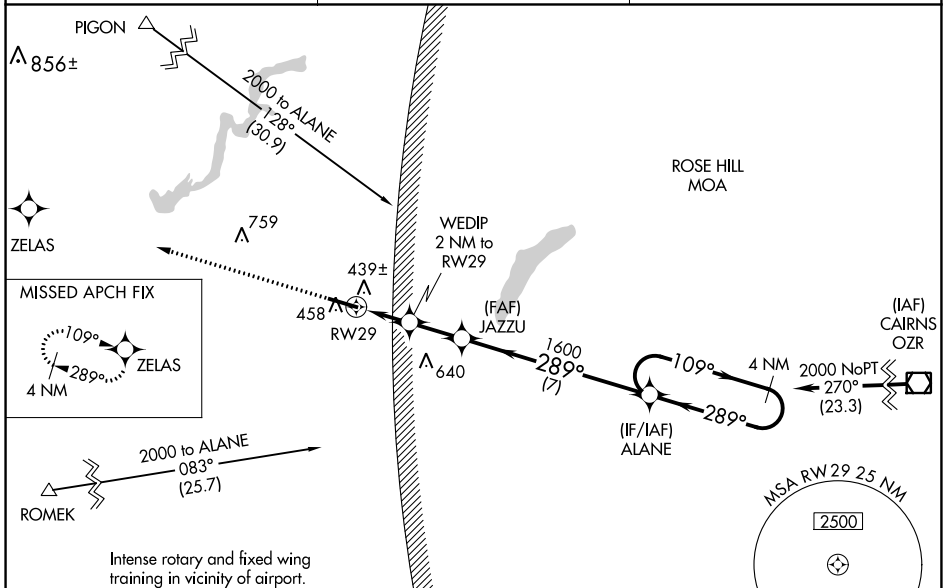
RNAV (GPS) RWY 29

SOUTH ALABAMA RGNL AT BILL BENTON FLD (79J)

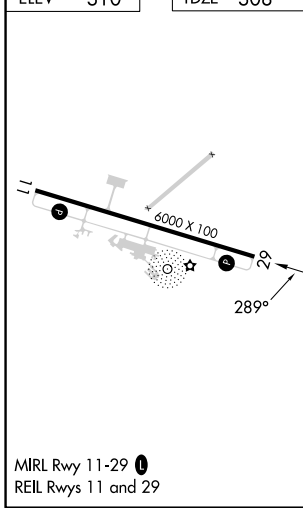
⚠ For uncompensated Baro-VNAV systems, LNAV/VNAV NA below -15°C (5°F) or above 54°C (130°F). DME/DME RNP-0.3 NA. Helicopter visibility reduction below ¾ SM NA. When local altimeter setting not received, use Cairns AAF (Fort Novosel) altimeter setting and increase all DA 82 feet, all MDA 100 feet. Increase LPV and LNAV/VNAV visibilities ¾ mile, LNAV and Circling Cat C and D ¼ mile. Baro-VNAV and VDP NA when using Cairns AAF (Fort Novosel) altimeter setting.

MISSED APPROACH: Climb to 2500 direct ZELAS and hold.

ASOS 134.875	CAIRNS APP CON ★ 133.45 239.275	UNICOM 122.8 (CTAF) 0
------------------------	---	---------------------------------



ELEV 310 TDZE 308



2500 ZELAS VGSI and RNAV glidepath not coincident (VGSI Angle 3.50/TCH 47). 4 NM Holding Pattern

*LNAV only WEDIP 2 NM to RWY 29 JAZZU 1600 ALANE 2000

1 NM to RWY 29 980 1600 GP 3.00° TCH 45

	-1 NM	-1 NM	1.9 NM	7 NM		
CATEGORY	A		B	C	D	
LPV DA	630-1		322 (400-1)			
LNAV/VNAV DA	628-1		320 (400-1)			
LNAV MDA	720-1	412 (500-1)	720-1½	412 (500-1½)		
CIRCLING	820-1	510 (600-1)	860-1½	550 (600-1½)	940-2	630 (700-2)

SE-4, 26 DEC 2024 to 23 JAN 2025

SE-4, 26 DEC 2024 to 23 JAN 2025