

APP CRS **279°**
 Rwy Idg **3753**
 TDZE **1063**
 Apt Elev **1070**

RNAV (GPS) RWY 28
 YOUNGSTOWN ELSER METRO (4G4)

RNP APCH - GPS.

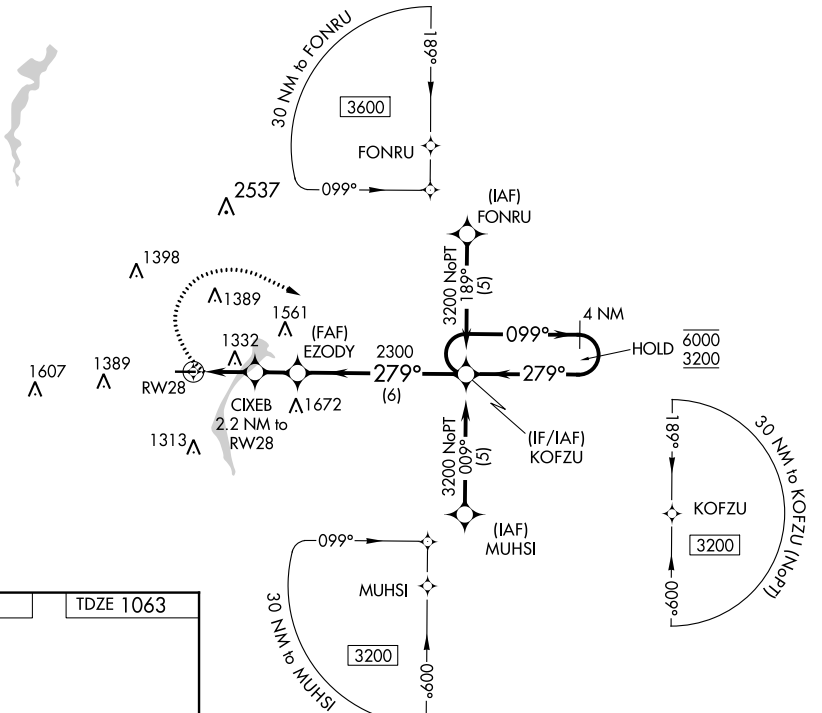
Procedure NA at night. Rwy 28 helicopter visibility reduction below 1 SM NA. Obtain local altimeter setting on CTAF; when not received, use New Castle altimeter setting and increase all MDA 40 feet.

MISSED APPROACH: Climbing right turn to 3200 direct KOFZU and hold.

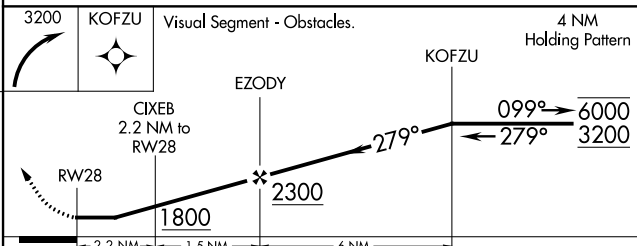
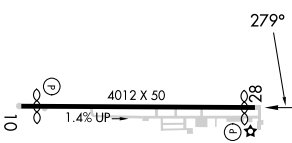
YOUNGSTOWN APP CON ★
133.95 322.3

CLNC DEL
119.25

UNICOM
123.05 (CTAF)



ELEV 1070 TDZE 1063



CATEGORY	A	B	C	D
LNAV MDA	1600-1	537 (600-1)	NA	
CIRCLING	1660-1	590 (600-1)	NA	

MIRL Rwy 10-28
 REIL Rwys 10 and 28
 YOUNGSTOWN, OHIO
 Amdt 1 24MAR22

40°58'N-80°41'W

YOUNGSTOWN ELSER METRO (4G4)
RNAV (GPS) RWY 28

EC-2, 26 DEC 2024 to 23 JAN 2025

EC-2, 26 DEC 2024 to 23 JAN 2025