

WAAS CH 73022 W32A	APP CRS 327°	Rwy Idg 4600 TDZE 1145 Apt Elev 1145
---------------------------------	------------------------	---

RNAV (GPS) RWY 32

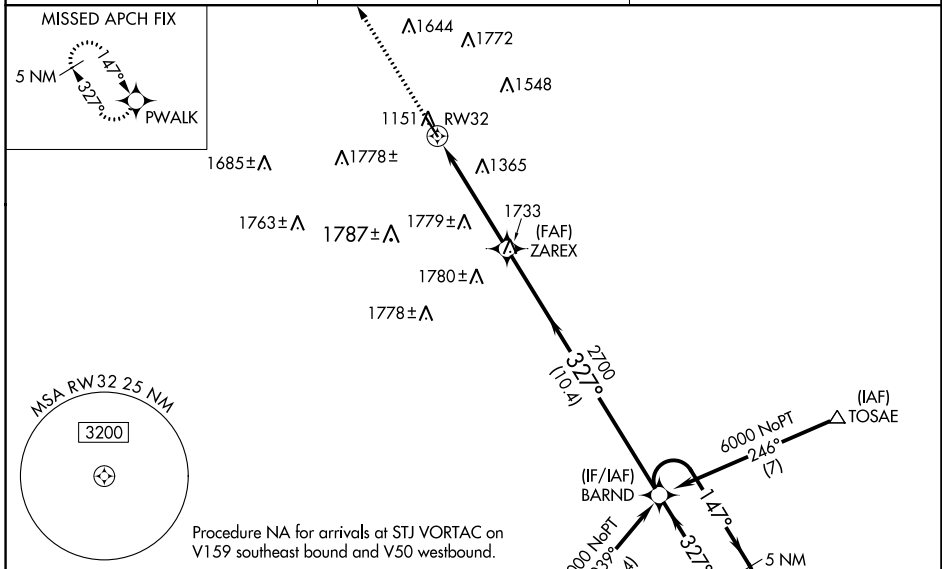
NORTHWEST MISSOURI RGNL (EVU)

RNP APCH - GPS.

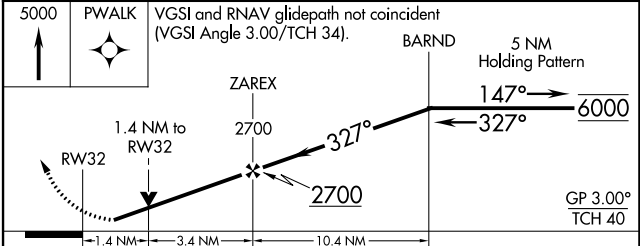
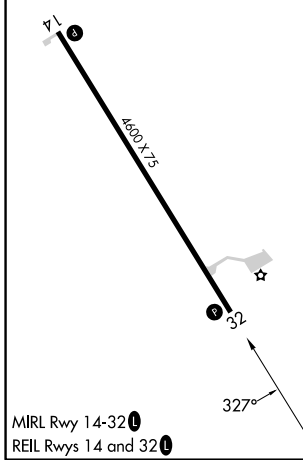
NA Circling NA east of Rwy 14-32. For uncompensated Baro-VNAV systems, LNAV/VNAV NA below -17°C or above 54°C. Rwy 32 helicopter visibility reduction below 3/4 SM NA. When local altimeter setting not received, use St. Joseph altimeter setting; increase LPV DA to 1520 feet, LNAV/VNAV DA to 1653 feet and LNAV/VNAV visibility all Cats 1/4 SM; increase all MDAs 140 feet and LNAV visibility Cat C 3/8 SM. Baro-VNAV and VDP NA when using St. Joseph altimeter setting.

MISSED APPROACH: Climb to 5000 direct PWALK and hold, continue climb-in-hold to 5000.

AWOS-3PT 118.225	MINNEAPOLIS CENTER 119.6 290.4	UNICOM 122.8 (CTAF) 1
----------------------------	--	---------------------------------



ELEV 1145	TDZE 1145
-----------	-----------



CATEGORY	A	B	C	D
LPV DA	1395-1 250 (300-1)			NA
LNAV/VNAV DA	1528-1 1/8 383 (400-1 1/8)			NA
LNAV MDA	1620-1	475 (500-1)	1620-1 3/8 475 (500-1 3/8)	NA
CIRCLING	1620-1	475 (500-1)	2120-3 975 (1000-3)	NA

NC-3, 26 DEC 2024 to 23 JAN 2025

NC-3, 26 DEC 2024 to 23 JAN 2025