

WAAS CH 78241 W 32A	APP CRS 318°	Rwy Idg TDZE 24 Apt Elev 24	4099
---	------------------------	---	-------------

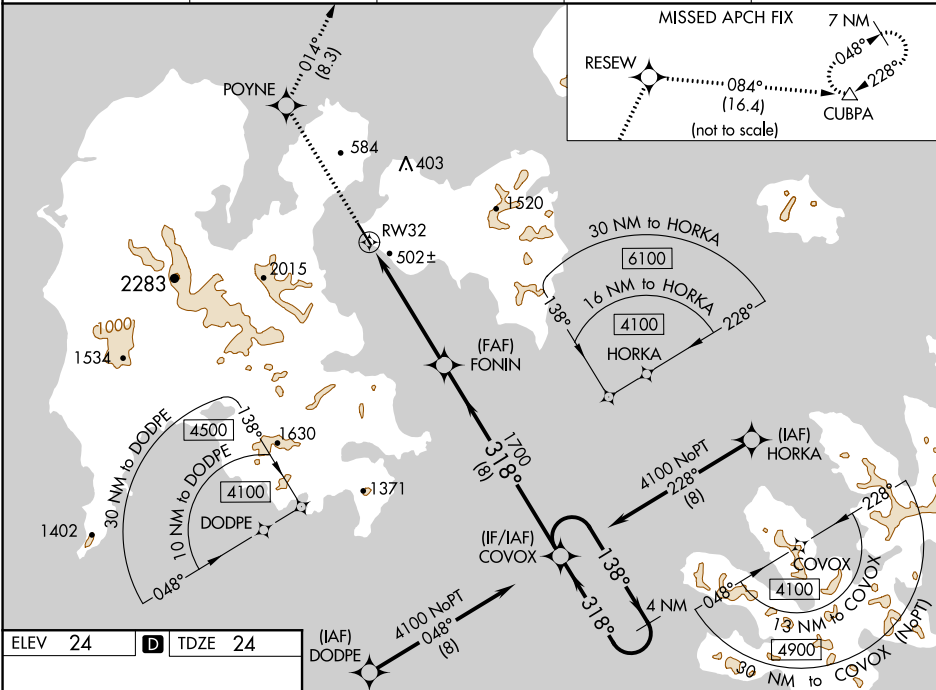
RNAV (GPS) RWY 32

SAND POINT (SDP) (PASD)

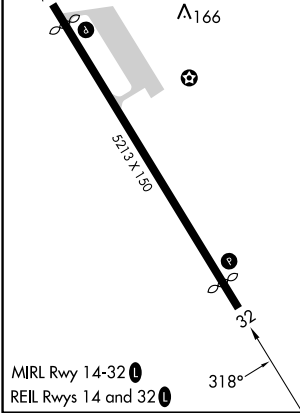
⚠ For uncompensated Baro-VNAV systems, LNAV/VNAV NA below -20°C (-4°F) or above 54°C (130°F). When local altimeter setting not received, procedure NA. Circling NA northeast of Rwy 14-32. DME/DME RNP-0.3 NA.

MISSED APPROACH: Climb to 7000 direct POYNE and on track 014° to RESEW and on track 084° to CUBPA and hold, continue climb-in-hold to 7000.

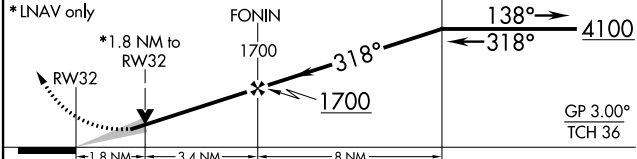
AWOS-3P 134.85	ANCHORAGE CENTER 125.35 346.3	CLNC DEL 122.3 (CTAF) ①	COLD BAY RADIO 122.3	UNICOM 122.8
--------------------------	---	-----------------------------------	--------------------------------	------------------------



ELEV 24	D	TDZE 24
---------	----------	---------



7000	POYNE	RESEW	CUBPA	VGSI and RNAV glidepath not coincident (VGSI Angle 3.60/TCH 36)
↑	✧ tr 014°	✧ tr 084°	△	COVOX 4 NM Holding Pattern



CATEGORY	A	B	C	D
LPV DA		566-1½	542 (600-1½)	
LNAV/VNAV DA		859-2½	835 (900-2½)	
LNAV MDA	760-1	736 (800-1)	760-2	736 (800-2)
C CIRCLING	760-1	736 (800-1)	1520-3 1496 (1500-3)	NA