

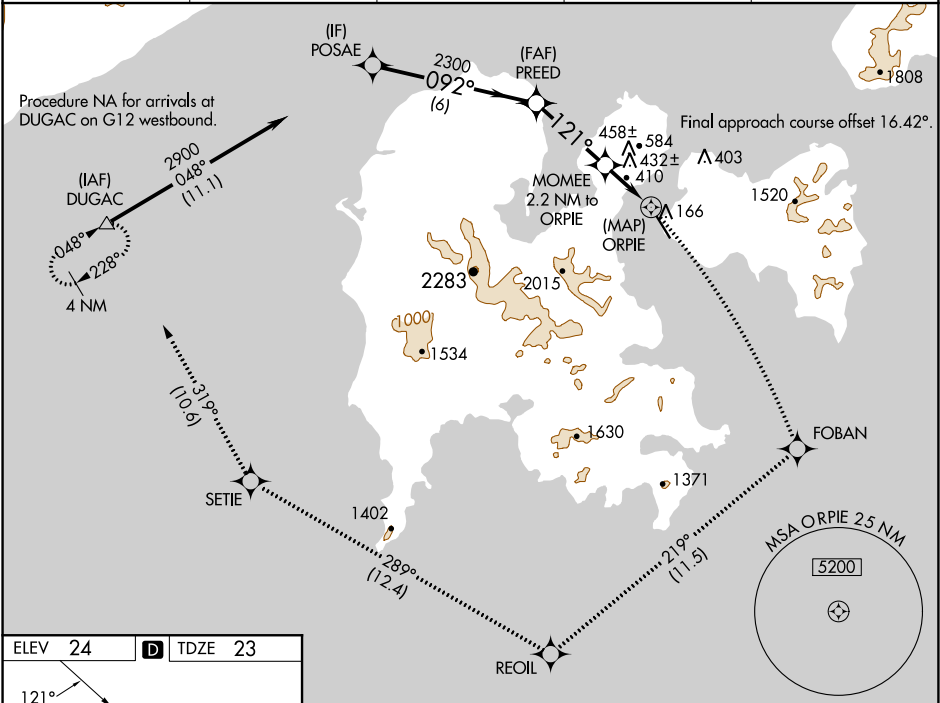
WAAS CH 56245 W14A	APP CRS 121°	Rwy Idg TDZE Apt Elev	4099 23 24
--	------------------------	-----------------------------	---------------------------------------

RNAV (GPS) Z RWY 14

SAND POINT (SDP) (PASD)

RNP APCH-GPS.	MISSED APPROACH: Climbing right turn to 5000 on the RNAV missed approach route to DUGAC and hold.
Circling NA northeast of Rwy 14-32.	

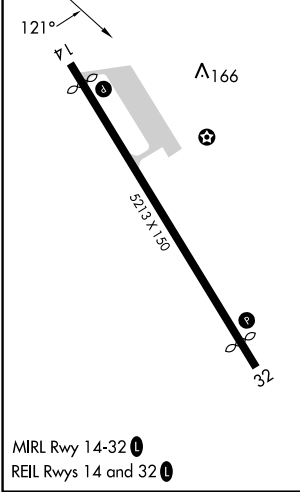
AWOS-3P 134.85	ANCHORAGE CENTER 125.35 346.3	CLNC DEL 122.3 (CTAF) 0	COLD BAY RADIO 122.3	UNICOM 122.8
--------------------------	---	-----------------------------------	--------------------------------	------------------------



AK, 26 DEC 2024 to 20 FEB 2025

AK, 26 DEC 2024 to 20 FEB 2025

ELEV 24	D	TDZE 23
---------	----------	---------



MIRL Rwy 14-32
 REIL Rws 14 and 32

5000	FOBAN	tr 219°	REOIL	tr 289°	SETIE	tr 319°	DUGAC
POSAGE	PREED	MOMEE	ORPIE	ORPIE	ORPIE		
2900	2300	1080					
6 NM		3.3 NM		1.1 NM	1.1 NM	0.5	
Category	A	B	C	D			
LP MDA	660-1	637 (700-1)	660-1¾	637 (700-1¾)			
LNAV MDA	820-1 797 (800-1)	820-1¼ 797 (800-1¼)	820-2½	797 (800-2½)			
C CIRCLING	820-1 796 (800-1)	820-1¼ 796 (800-1¼)	1580-3 1556 (1600-3)	2240-3 2216 (2300-3)			