

APP CRS	Rwy Idg	3500
316°	TDZE	1233
	Apt Elev	1233

RNAV (GPS) RWY 32

SHELL LAKE MUNI (SSQ)

RNP APCH.

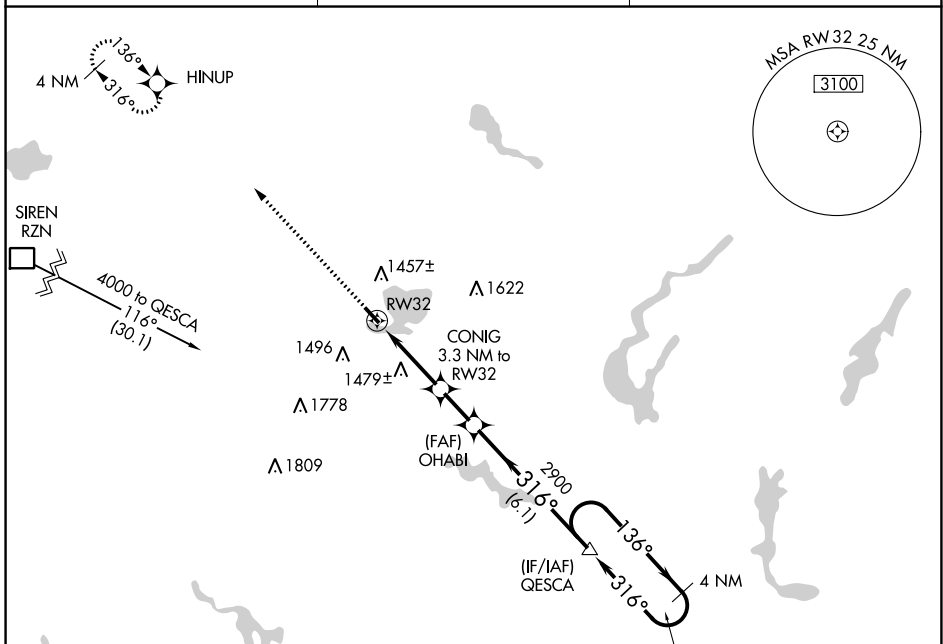
▼ Procedure NA at night. Rwy 32 helicopter visibility reduction below 1 SM NA.
▲ NA Use Cumberland altimeter setting.

MISSED APPROACH: Climb to 4000 direct HINUP and hold.

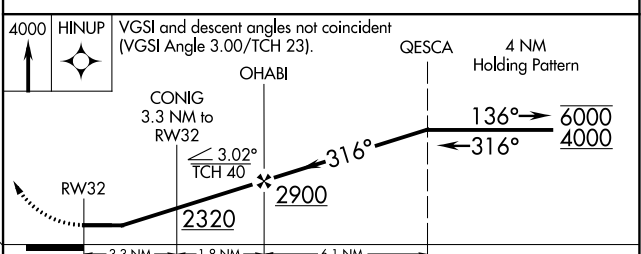
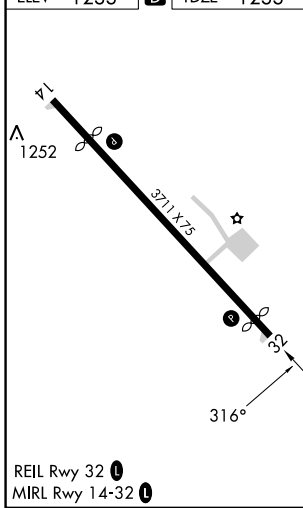
UBE AWOS-3PT
119.175

MINNEAPOLIS CENTER
126.45 276.4

UNICOM
122.8 (CTAF)



ELEV	1233	D	TDZE	1233
------	------	----------	------	------



CATEGORY	A	B	C	D
LNAV MDA	1800-1	567 (600-1)	1800-1 ⁵ / ₈ 567 (600-1 ⁵ / ₈)	1800-1 ³ / ₄ 567 (600-1 ³ / ₄)
CIRCLING	1840-1	607 (700-1)	1840-1 ³ / ₄ 607 (700-1 ³ / ₄)	2020-2 ¹ / ₂ 787 (800-2 ¹ / ₂)

EC-3, 26 DEC 2024 to 23 JAN 2025

EC-3, 26 DEC 2024 to 23 JAN 2025