

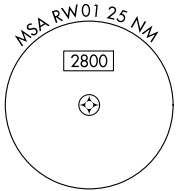
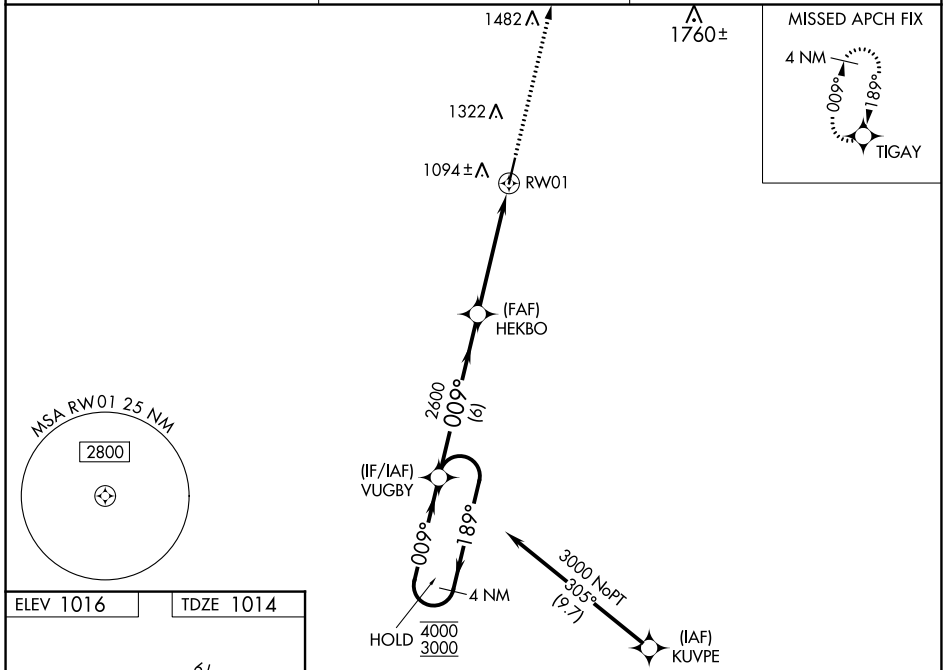
WAAS CH 86628 W01A	APP CRS 009°	Rwy Idg TDZE Apt Elev	5501 1014 1016
----------------------------------------	------------------------	-----------------------------	-------------------------------------------

RNAV (GPS) RWY 1

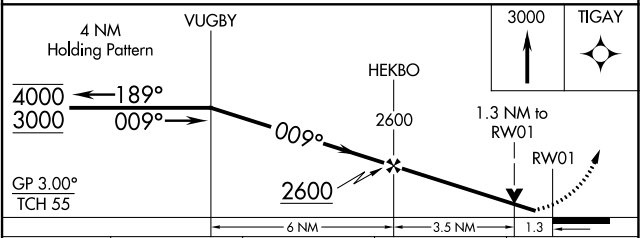
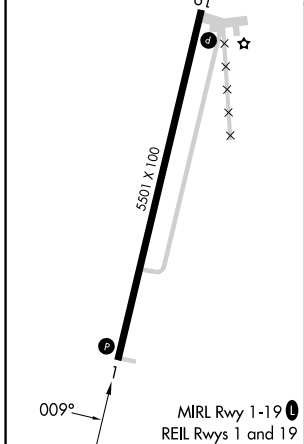
ALLEN COUNTY (K88)

RNP APCH - GPS.	<p>MISSED APPROACH: Climb to 3000 direct TIGAY and hold.</p>
<p>Baro-VNAV and VDP NA when using Chanute altimeter setting. For uncompensated Baro-VNAV systems, LNAV/VNAV NA below -17°C or above 54°C. Rwy 1 helicopter visibility reduction below ¾ SM NA. When local altimeter setting not received, use Chanute altimeter setting: increase LPV DA to 1299 feet; increase LNAV/VNAV DA to 1324 feet; increase all MDAS 40 feet and visibility Circling Cat C ¼ SM.</p>	

AWOS-3PT 128.325	KANSAS CITY CENTER 127.725 270.25	UNICOM 122.8 (CTAF) 0
----------------------------	---------------------------------------------	---------------------------------



ELEV 1016	TDZE 1014
-----------	-----------



CATEGORY	A	B	C	D
LPV DA		1264-1	250 (300-1)	NA
LNAV/VNAV DA		1289-1	275 (300-1)	NA
LNAV MDA	1480-1	466 (500-1)	1480-1 3/8 466 (500-1 3/8)	NA
CIRCLING	1480-1 464 (500-1)	1660-1 644 (700-1)	1660-1 3/4 644 (700-1 3/4)	NA

NC-2, 26 DEC 2024 to 23 JAN 2025

NC-2, 26 DEC 2024 to 23 JAN 2025