

| | | |
|----------------------------|------------------------|-----------------|
| LOC I-HNZ 109.75 | APP CRS 060° | Rwy Idg 5501 |
| | | TDZE 526 |
| | | Apt Elev 526 |

LOC RWY 6

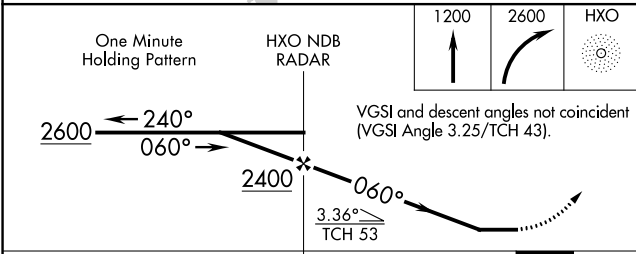
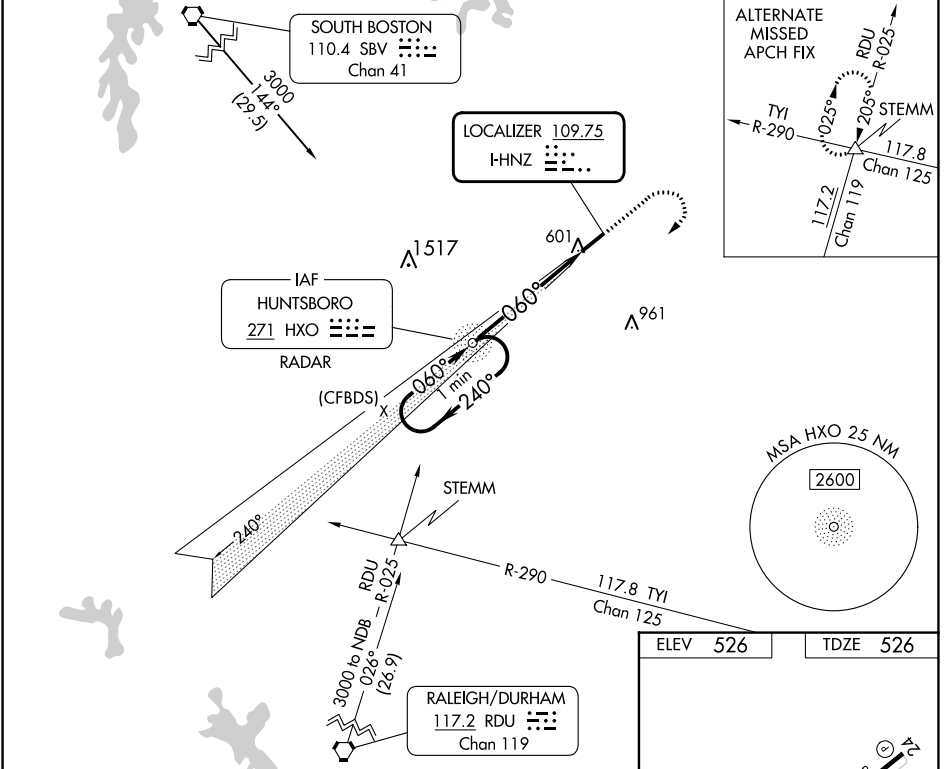
HENDERSON/OXFORD (HNZ)

ADF or RADAR required. ADF or RADAR required for procedure entry.

⚠ Rwy 6 helicopter visibility reduction below 3/4 SM NA. When local altimeter setting not received, use Roxboro altimeter setting and increase all MDA 80 feet; increase S-6 Cat C/D visibility 1/2 SM and Circling Cat C and D visibility 1/4 SM.

MISSED APPROACH: Climb to 1200 then climbing right turn to 2600 direct HXO NDB/RADAR and hold.

| | | |
|--------------------------|--|---------------------------------|
| AWOS-3 118.625 | RALEIGH APP CON 132.35 256.9 | UNICOM 122.8 (CTAF) 0 |
|--------------------------|--|---------------------------------|



| | | | | | |
|-------------------|------|------|------|------|------|
| ELEV | 526 | TDZE | 526 | | |
| | | | | | |
| REIL Rwy 6 0 | | | | | |
| MIRL Rwy 6-24 0 | | | | | |
| FAF to MAP 5.2 NM | | | | | |
| Knots | 60 | 90 | 120 | 150 | 180 |
| Min:Sec | 5:12 | 3:28 | 2:36 | 2:05 | 1:44 |

| CATEGORY | A | B | C | D |
|-------------------|-------|-------------|-------------------------------|-------------------------------|
| S-6 | 980-1 | 454 (500-1) | 980-1 3/8 | 454 (500-1 3/8) |
| C CIRCLING | 980-1 | 454 (500-1) | 1100-1 1/2 574 (600-1 1/2) | 1280-2 1/2 754 (800-2 1/2) |

SE-2, 26 DEC 2024 to 23 JAN 2025

SE-2, 26 DEC 2024 to 23 JAN 2025