

TACAN RWY 31

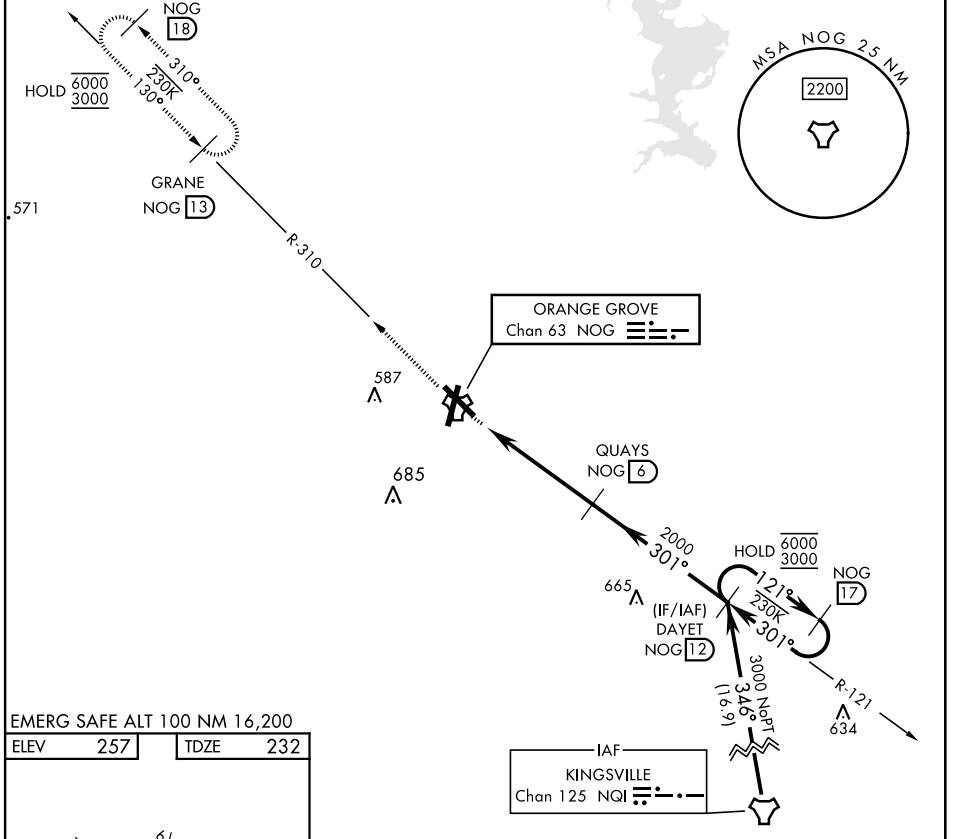
TACAN Chan 63	APCH CRS 301°	Rwy Idg TDZE Arprt Elev	8001 232 257
-------------------------	-------------------------	-------------------------------	-----------------------------------------

[USN]

ORANGE GROVE NALF (KNOG)

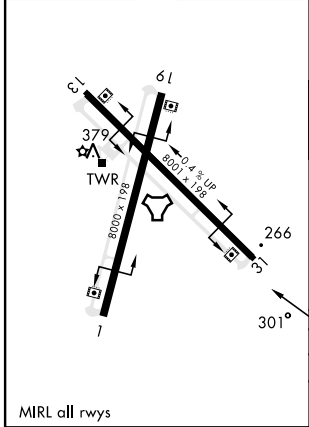
MISSED APPROACH: Climb to 700 then climb to 3000 intercept NOG TACAN R-310 to GRANE and hold.

ATIS ★ 254.35	KINGSVILLE APP CON 119.90 290.45	TOWER ★ 128.4 281.425	GND CON 229.4
-------------------------	--------------------------------------------	---------------------------------	-------------------------



EMERG SAFE ALT 100 NM 16,200

ELEV	257	TDZE	232
------	-----	------	-----



	700	3000	GRANE NOG 13	DAYET NOG 12	NOG 17
	↑	↻			
	NOG TACAN	PEKEE NOG 11	QUAYS NOG 6	121° →	← 301°
			2000		6000 3000
	0.5	4.9 NM			
CATEGORY	A	B	C	D	
S-31		520-1	288	(300-1)	
CIRCLING	720-1	463 (500-1)	920-1¾ 663 (700-1¾)	1000-2½ 743 (800-2½)	

TACAN RWY 31

SC-3, 26 DEC 2024 to 23 JAN 2025

SC-3, 26 DEC 2024 to 23 JAN 2025