

WAAS CH <b>63107</b> W17A	APP CRS <b>175°</b>	Rwy Idg TDZE Apt Elev	<b>4201</b> <b>1500</b> <b>1500</b>
---------------------------------	------------------------	-----------------------------	-------------------------------------------

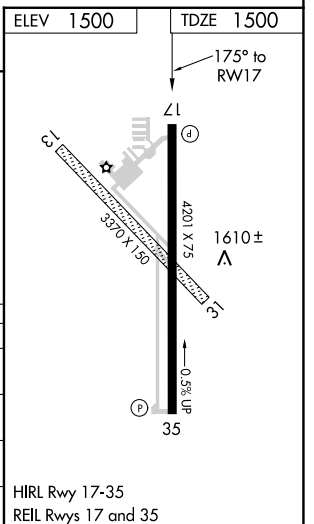
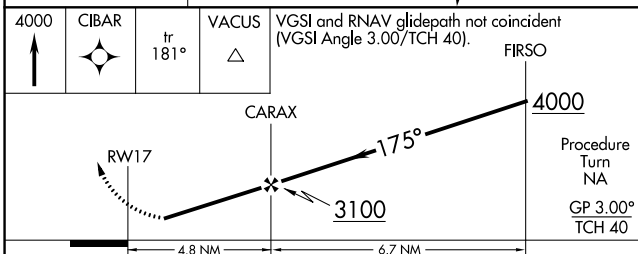
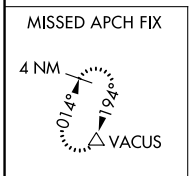
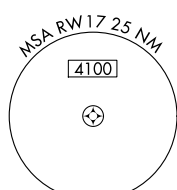
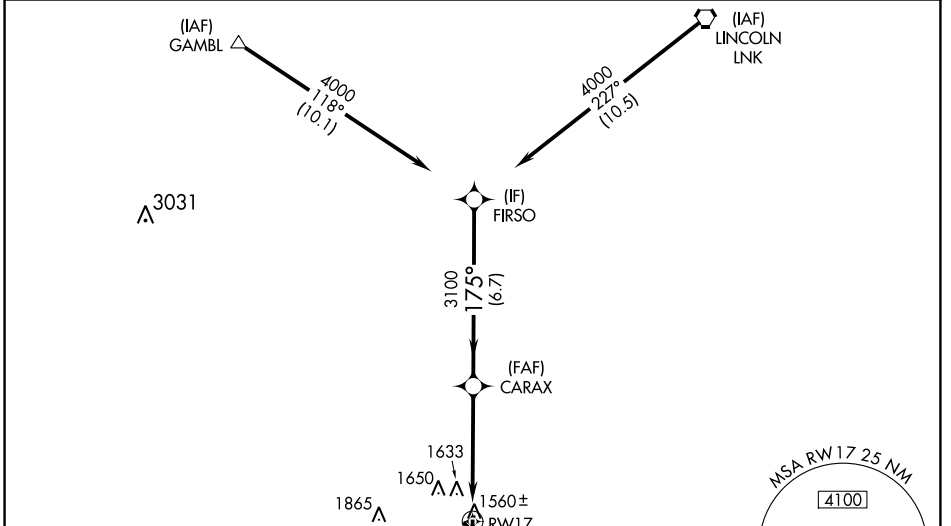
# RNAV (GPS) RWY 17

CRETE MUNI (CEK)

**NA** Baro-VNAV NA. DME/DME RNP-0.3 NA. Visibility reduction by helicopters NA. Use Lincoln altimeter setting; when not received, use Beatrice altimeter setting.

**MISSED APPROACH:** Climb to 4000 direct CIBAR and via 181° track to VACUS and hold, continue climb-in-hold to 4000.

OMAHA APP CON <b>124.0 270.3</b>	UNICOM <b>122.8 (CTAF)</b>
-------------------------------------	-------------------------------



CATEGORY	A	B	C	D
LPV DA	1875-1¼	375 (400-1¼)		NA
LNAV/VNAV DA	2051-2	551 (600-2)		NA
LNAV MDA	2080-1	580 (600-1)		NA
CIRCLING	2140-1	640 (700-1)		NA

NC-2, 26 DEC 2024 to 23 JAN 2025

NC-2, 26 DEC 2024 to 23 JAN 2025