

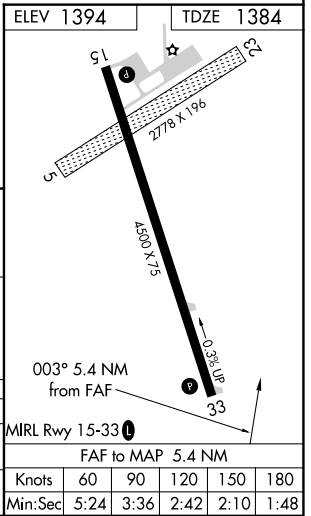
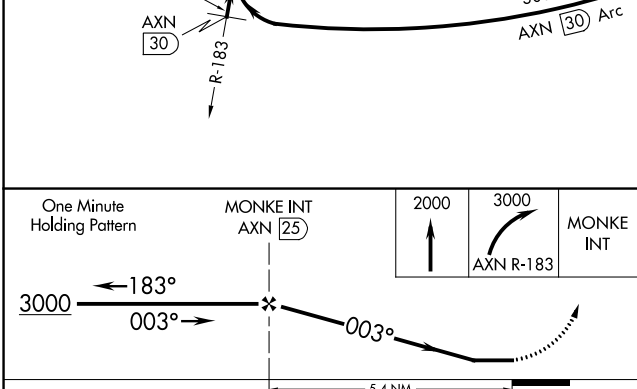
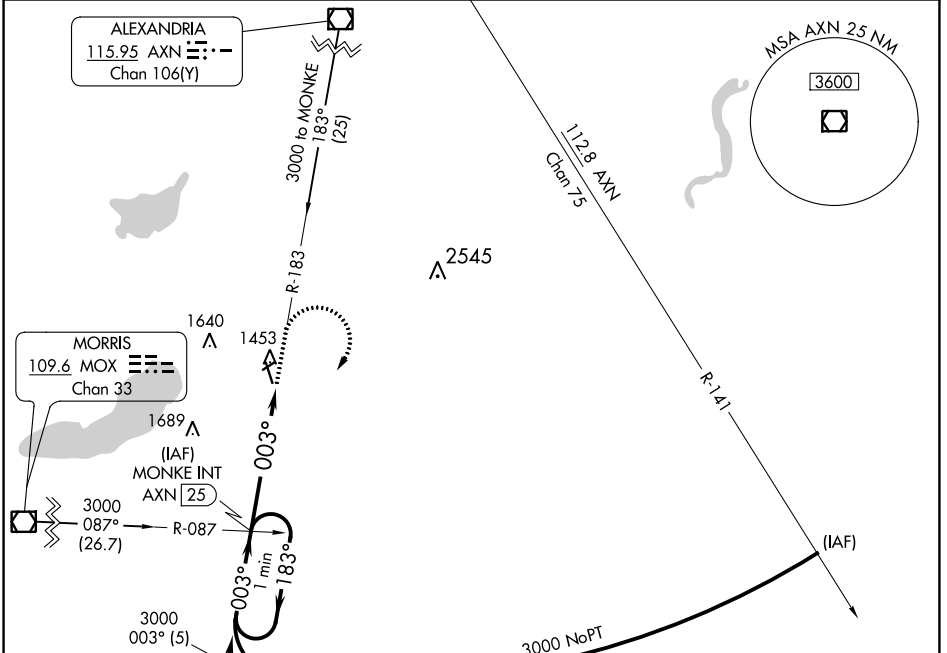
VOR/DME AXN 115.95 Chan 106(Y)	APP CRS 003°	Rwy Idg 4500 TDZE 1384 Apt Elev 1394
--	------------------------	---

VOR RWY 33
GLENWOOD MUNI (GHW)

▼ Circling to Rwy 5/23 NA. When local altimeter setting not received, use Alexandria altimeter setting and increase all MDA 40 feet and S-33 Cat C visibility ¼ mile. Rwy 33 helicopter visibility reduction below ¾ SM NA.

MISSED APPROACH: Climb to 2000, then climbing right turn to 3000 via AXN R-183 to MONKE INT/25 DME and hold.

AWOS-3 118.925	MINNEAPOLIS CENTER 126.1 269.2	GCO 121.725	CTAF 122.90
--------------------------	--	-----------------------	-----------------------



CATEGORY	A	B	C	D
S-33	1880-1	496 (500-1)	1880-1¼ 496 (500-1¼)	NA
CIRCLING	1880-1	486 (500-1)	1940-1½ 546 (600-1½)	NA

NC-1, 26 DEC 2024 to 23 JAN 2025

NC-1, 26 DEC 2024 to 23 JAN 2025