

APP CRS
140°

Rwy Idg **3299**
TDZE **297**
Apt Elev **297**

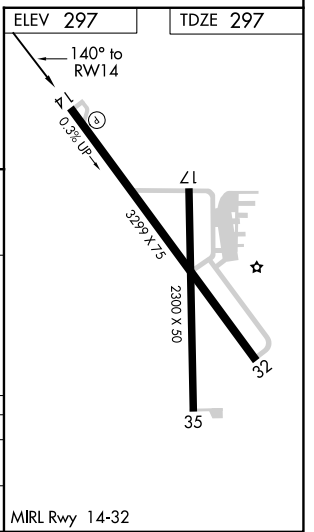
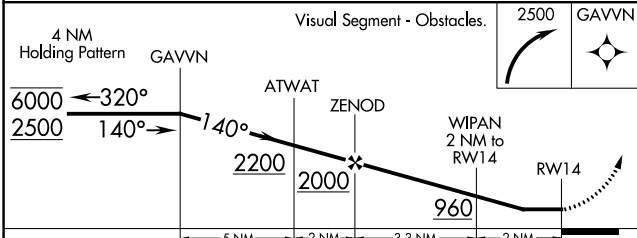
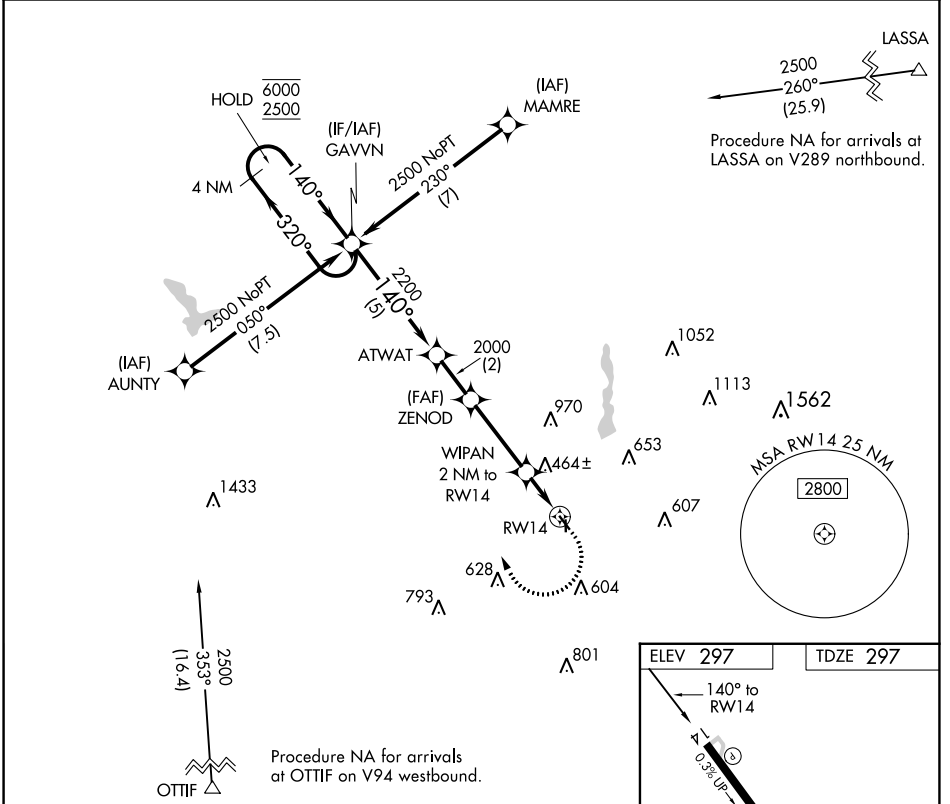
RNAV (GPS) RWY 14

GLADEWATER MUNI (Ø7F)

RNP APCH. Procedure NA at night. Rwy 14 helicopter visibility reduction below 1 SM NA. Use Gilmer altimeter setting, when not received use Longview altimeter setting and increase all MDA 20 feet and increase LNAV Cat C visibility 1/8 SM.

MISSED APPROACH: Climbing right turn to 2500 direct GAVVN and hold.

JXI AWOS-3PT **120.25** LONGVIEW APP CON ★ **124.275 257.975** CTAF **122.9**



CATEGORY	A	B	C	D
LNAV MDA	800-1 503 (600-1)	800-1 503 (600-1)	800-1 3/8 503 (600-1 3/8)	NA
CIRCLING	880-1 583 (600-1)	1000-1 703 (800-1)	1000-2 703 (800-2)	NA

SC-2, 26 DEC 2024 to 23 JAN 2025

SC-2, 26 DEC 2024 to 23 JAN 2025