

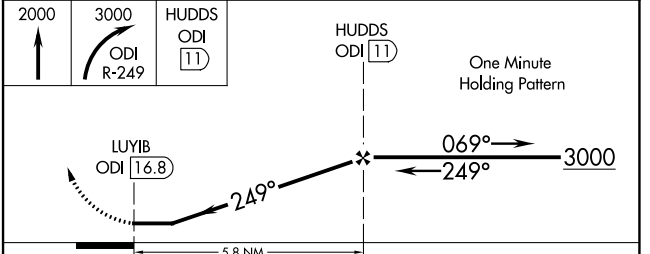
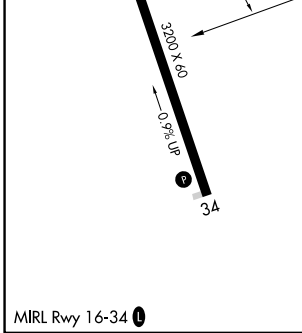
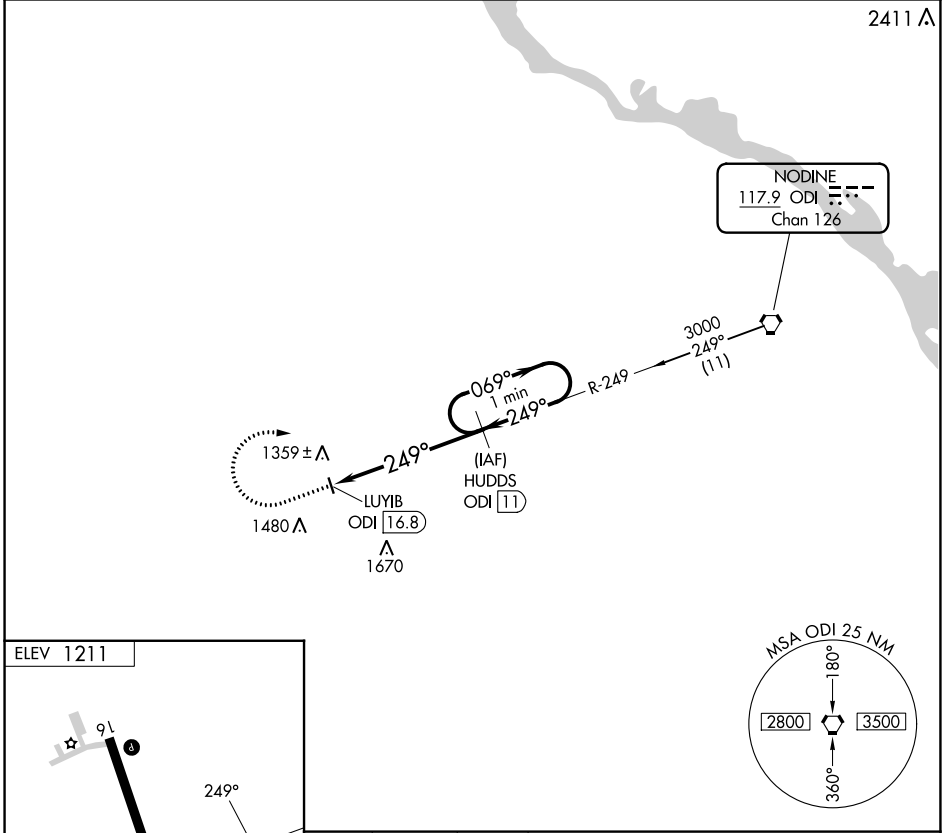
VORTAC ODI <b>117.9</b> Chan <b>126</b>	APP CRS <b>249°</b>	Rwy Idg TDZE Apt Elev	<b>N/A</b> <b>N/A</b> <b>1211</b>
---	------------------------	-----------------------------	---

# VOR-A

RUSHFORD MUNI/ROBERT W BUNKE FLD (55Y)

**▼** Use Preston altimeter setting, when not received, use Winona altimeter setting and increase all MDAs 80 feet and Cat C visibility ¼ SM. DME required.  
**▲ NA** MISSED APPROACH: Climb to 2000, then climbing right turn to 3000 on ODI VORTAC R-249 to HUDDS/ODI 11 DME and hold.

ROCHESTER APP CON * <b>119.8 251.125</b>	CTAF <b>122.9 0</b>
---	------------------------



CATEGORY	A	B	C	D
CIRCLING	1720-1 509 (600-1)	1880-1 669 (700-1)	2080-2½ 869 (900-2½)	NA

# VOR-A

NC-1, 26 DEC 2024 to 23 JAN 2025

NC-1, 26 DEC 2024 to 23 JAN 2025