

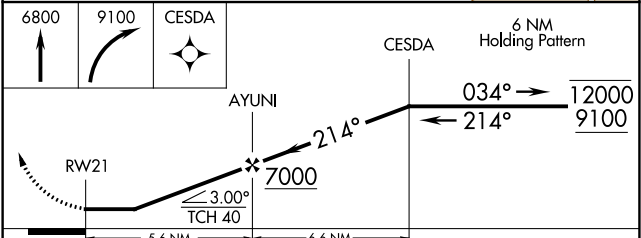
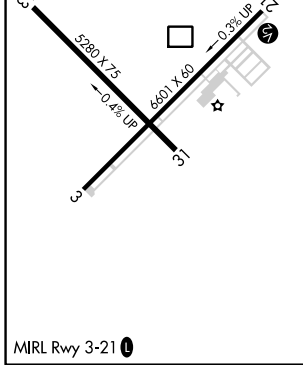
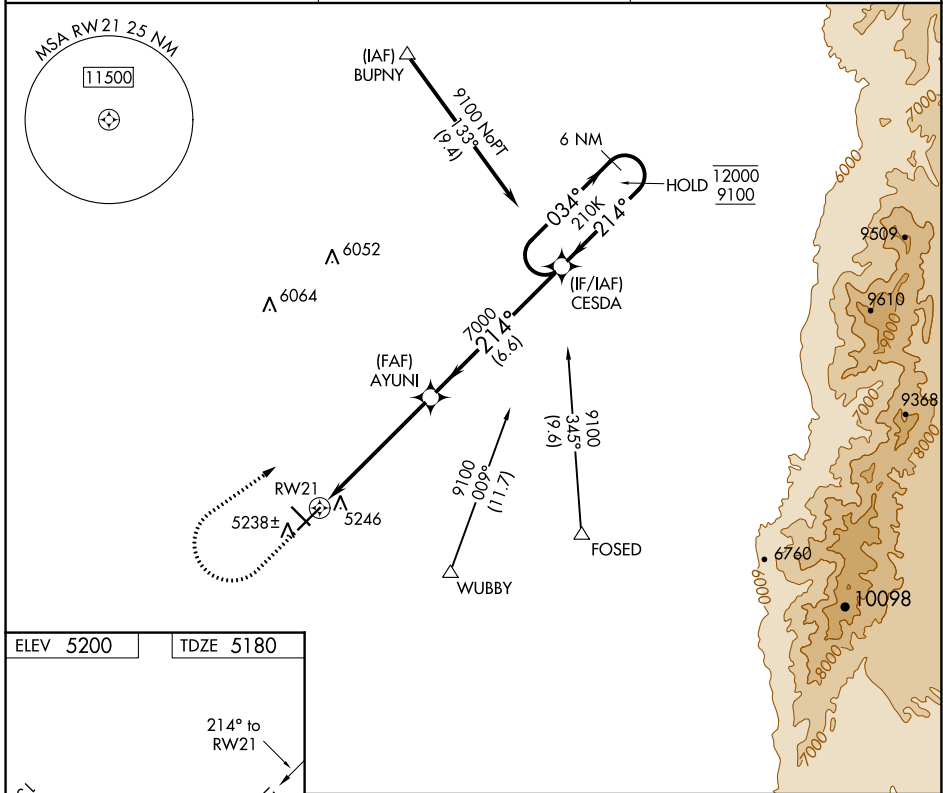
APP CRS <b>214°</b>	Rwy Idg <b>6601</b>
	TDZE <b>5180</b>
	Apt Elev <b>5200</b>

# RNAV (GPS) RWY 21

BELEN RGNL (BRG)

RNP APCH	MISSED APPROACH: Climb to 6800 then climbing right turn to 9100 direct CESDA and hold.
Procedure NA at night. Rwy 21 helicopter visibility reduction below 1 SM NA.	

AWOS-3PT <b>118.55</b>	ALBUQUERQUE APP CON <b>123.9 354.1</b>	UNICOM <b>122.8 (CTAF) 0</b>
---------------------------	---	---------------------------------



CATEGORY	A	B	C	D
LNNAV MDA	5560-1 380 (400-1)			NA
CIRCLING	5600-1 400 (400-1)	5660-1 460 (500-1)	5660-1½ 460 (500-1½)	NA

SW-1, 26 DEC 2024 to 23 JAN 2025

SW-1, 26 DEC 2024 to 23 JAN 2025