

APP CRS	Rwy Idg	3200
255°	TDZE	464
	Apt Elev	464

RNAV (GPS) RWY 26

ORANGE COUNTY (OMH)

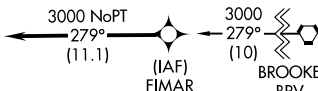
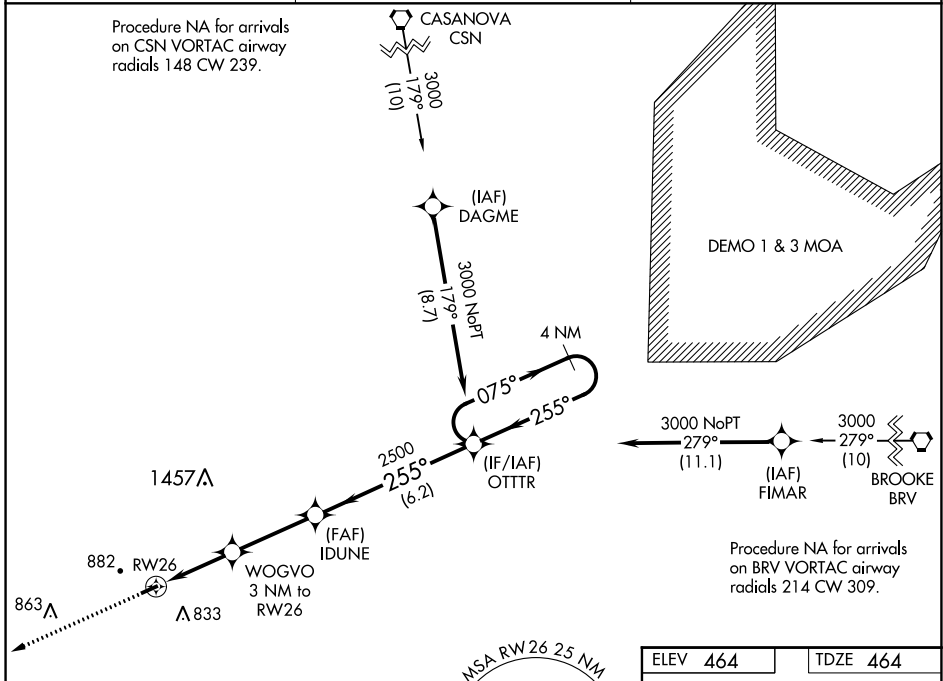
RNP APCH - GPS.

▼ When local altimeter setting not received, use Charlottesville altimeter setting and increase all MDA 80 feet. Rwy 26 helicopter visibility reduction below 1 SM NA. Procedure NA at night.

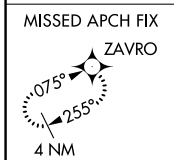
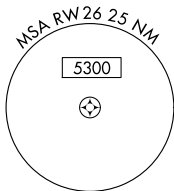
MISSED APPROACH:
Climb to 3100 direct ZAVRO and hold.

AWOS-3 118.075	POTOMAC APP CON 132.85 323.125	UNICOM 122.8 (CTAF) 0
---------------------------------	-------------------------------------------------	----------------------------------------

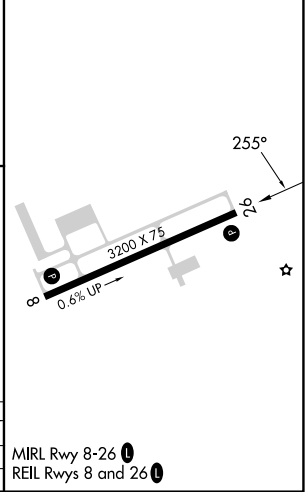
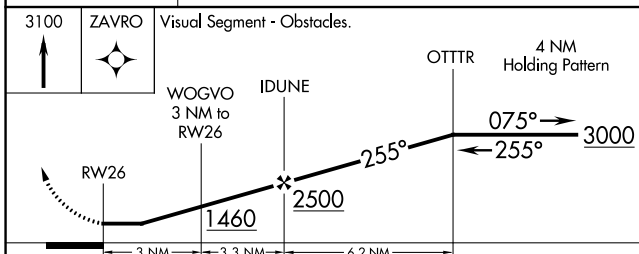
Procedure NA for arrivals on CSN VORTAC airway radials 148 CW 239.



Procedure NA for arrivals on BRV VORTAC airway radials 214 CW 309.



ELEV 464	TDZE 464
----------	----------



CATEGORY	A	B	C	D
LNAV MDA	980-1	516 (600-1)		NA
CIRCLING	1300-1¼	836 (900-1¼)		NA

NE-3, 26 DEC 2024 to 23 JAN 2025

NE-3, 26 DEC 2024 to 23 JAN 2025