

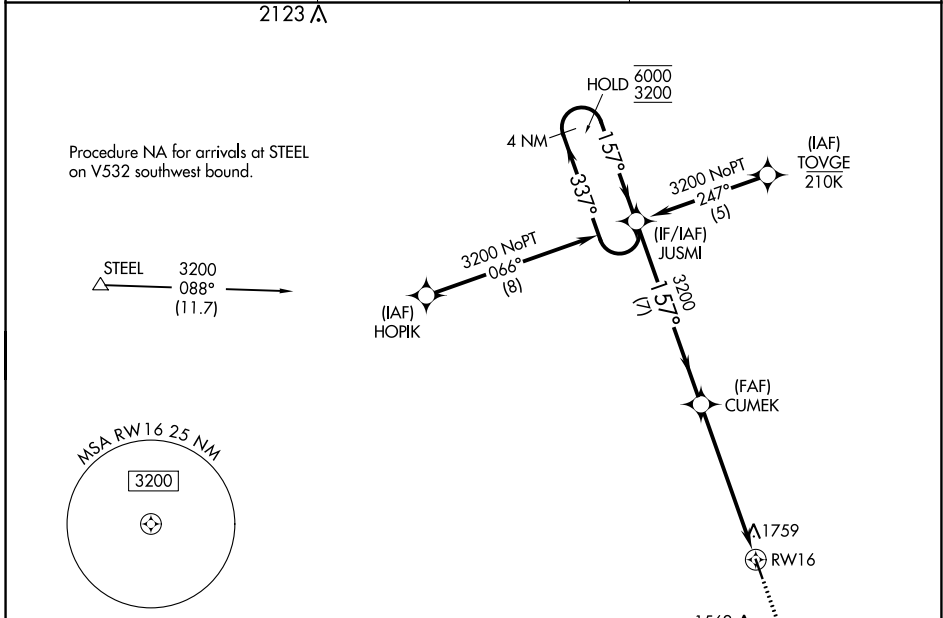
APP CRS	Rwy Idg	<b>4200</b>
<b>157°</b>	TDZE	<b>1283</b>
	Apt Elev	<b>1283</b>

# RNAV (GPS) RWY 16

MARYSVILLE MUNI (MYZ)

RNP APCH - GPS.	MISSED APPROACH: Climb to 3200 direct JELOK and hold.
<p>▼ When local altimeter setting not received, use Beatrice altimeter setting and increase all MDAs 80 feet and increase LNAV Cat A and Circling Cats B/C visibility ¼ SM.</p>	

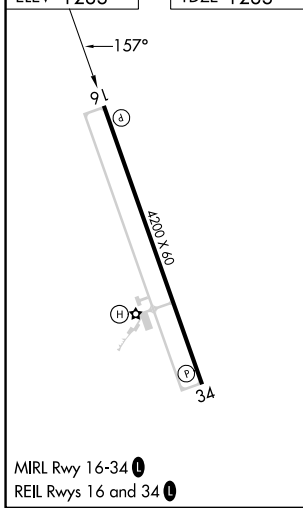
AWOS-3PT <b>118.675</b>	KANSAS CITY CENTER <b>123.8 343.7</b>	UNICOM <b>122.8 (CTAF) 0</b>
----------------------------	--	---------------------------------



NC-2, 26 DEC 2024 to 23 JAN 2025

NC-2, 26 DEC 2024 to 23 JAN 2025

ELEV 1283	TDZE 1283
-----------	-----------



Visual Segment - Obstacles.		3200	JELOK	
4 NM Holding Pattern				
JUSMI		CUMEK		
6000 3200 ← 337°		3200		
157° →				
7 NM		3.4 NM	2.6 NM to RWY16	
2.6 NM to RWY16				
CATEGORY	A	B	C	D
LNAV MDA	2140-1 857 (900-1)	2140-1¼ 857 (900-1¼)	2140-2½ 857 (900-2½)	NA
CIRCLING	2180-1¼ 897 (900-1¼)	2180-2¾ 897 (900-2¾)	2180-2¾ 897 (900-2¾)	NA