

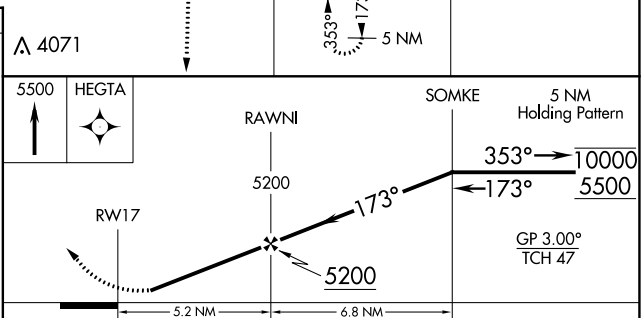
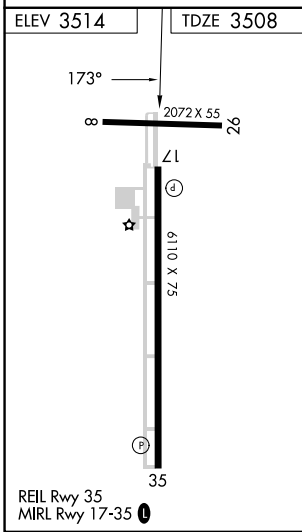
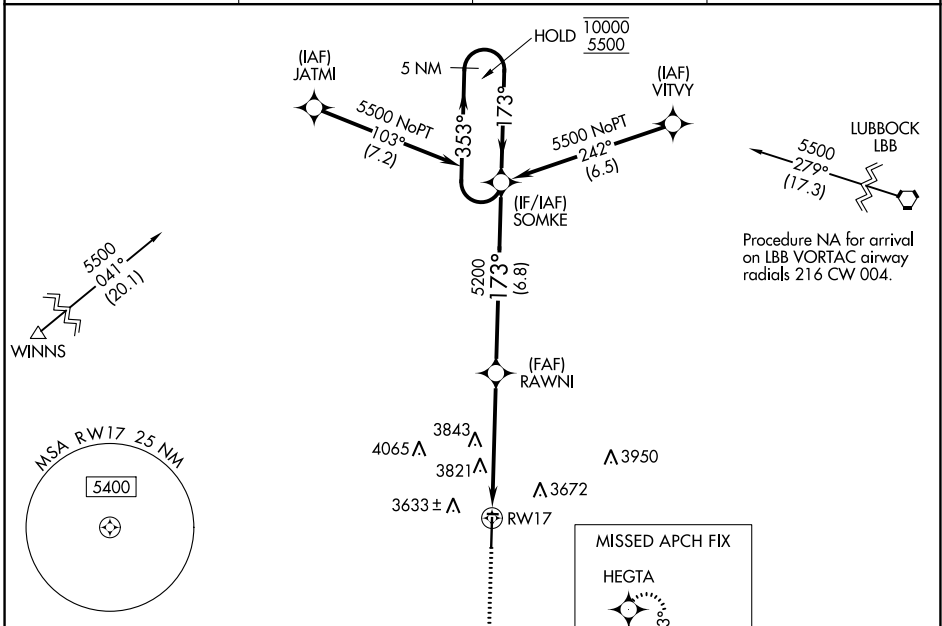
WAAS CH <b>77631</b> <b>W17A</b>	APP CRS <b>173°</b>	Rwy Idg TDZE Apt Elev	<b>6110</b> <b>3508</b> <b>3514</b>
--	------------------------	-----------------------------	---

# RNAV (GPS) RWY 17

LEVELLAND MUNI (LLN)

RNP APCH-GPS.	MISSED APPROACH: Climb to 5500 direct HEGTA and hold.
<p>▼ Rwy 17 helicopter visibility reduction below 3/4 SM NA. Baro-VNAV NA. Use Lubbock altimeter setting. Circling to Rwy 8, 26 NA at night. Circling NA west of Rwy 17-35.</p> <p>▲ NA</p>	

AWOS-3PT <b>121.125</b>	LBB ASOS <b>125.3 270.275</b>	LUBBOCK APP CON <b>119.2 351.8</b>	UNICOM <b>122.8 (CTAF)</b>
----------------------------	----------------------------------	---------------------------------------	-------------------------------



CATEGORY	A	B	C	D
LPV DA		3856-1 1/8	348 (400-1 1/8)	
LNAV/VNAV DA		4268-2 3/4	760 (800-2 3/4)	
LNAV MDA	4180-1	672 (700-1)	4180-1 7/8	672 (700-1 7/8)
CIRCLING	4180-1 666 (700-1)	4300-1 786 (800-1)	4320-2 1/4 806 (900-2 1/4)	4320-2 1/2 806 (900-2 1/2)

SC-2, 26 DEC 2024 to 23 JAN 2025

SC-2, 26 DEC 2024 to 23 JAN 2025