

(WATFO6.WATFO) 23222

AL-6575 (FAA)

HOUSTON/SOUTHWEST (AXH)  
HOUSTON, TEXAS

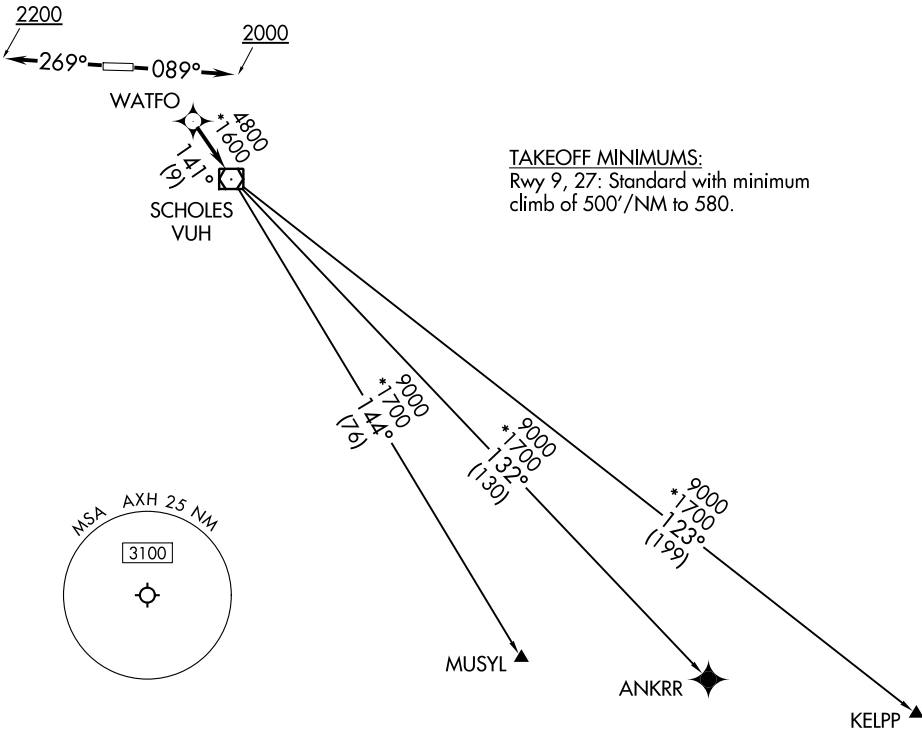
# WATFO SIX DEPARTURE (RNAV)

AWOS-3  
123.625  
CTAF  
123.0  
CLNC DEL  
120.8  
HOUSTON DEP CON  
123.8 257.7

RNAV 1 - DME/DME/IRU or GPS.

RADAR required.

**TOP ALTITUDE:  
ASSIGNED BY ATC**



**TAKEOFF MINIMUMS:**  
Rwy 9, 27: Standard with minimum  
climb of 500'/NM to 580.

SC-5, 26 DEC 2024 to 23 JAN 2025

SC-5, 26 DEC 2024 to 23 JAN 2025

NOTE: Chart not to scale.



## DEPARTURE ROUTE DESCRIPTION

TAKEOFF RUNWAY 9: Climb on heading 089° to 2000, for RADAR vectors to WATFO, thence. . . .

TAKEOFF RUNWAY 27: Climb on heading 269° to 2200, for RADAR vectors to WATFO, thence. . . .

. . . .on track 141° to VUH VOR/DME, then on (transition). Maintain ATC assigned altitude. Expect filed altitude 10 minutes after departure.

ANKRR TRANSITION (WATFO6.ANKRR)

KELPP TRANSITION (WATFO6.KELPP)

MUSYL TRANSITION (WATFO6.MUSYL)

WATFO SIX DEPARTURE (RNAV)

(WATFO6.WATFO) 10AUG23

HOUSTON, TEXAS  
HOUSTON/SOUTHWEST (AXH)